

Feeser's
FOOD
DISTRIBUTORS

NOVEMBER

2023

**REBATES
& OFFERS**



WELCOME TO FEESER'S

FAMILY-OWNED FOR OVER 120 YEARS

HELPING HEROES

Feeser's recognizes the **heroes of the Food Industry**. From our employees and peers in distribution to the restaurants, businesses, and institutions we serve, the challenges we overcome to serve the public should be celebrated!

For information or to order any of the products in this publication, contact our **Sales Team** at **717.564.4636** or

WE SUPPLY
EVERYTHING BUT
THE APPETITE

**CLICK
HERE**

Feeser's

FOOD

DISTRIBUTORS

2023 BRAKEBUSH FALL SPOTLIGHT

Save \$5.00 per case On Select Products



Sliced Natural NAE Breast Meat, 3/8"



Tater Chip Strips™



Country Krisp® Breaded Wings

Save on select products purchased between October 1, 2023 and November 30, 2023.

DIST Code	BB Code	Description	Pack	Case Wt.	Cases Purchased
n/a	5215	Sliced Natural NAE Breast Meat, 3/8"	2/5 lbs.	10 lbs.	
n/a	5257	Pulled & Shredded Oven Roasted Breast Meat	2/5 lbs.	10 lbs.	
252362	5329	Italian Breaded Portioned NAE Filets	2/5 lbs.	10 lbs.	
n/a	5755	Southern-Style, Chicken-Fried-Chicken Breaded Filets	2/5 lbs.	10 lbs.	
n/a	5835	Spicy Breaded Breast Cutlets	2/5 lbs.	10 lbs.	
n/a	5845	Tater Chip Strips™	2/5 lbs.	10 lbs.	
n/a	6562	Country Krisp® Breaded Wings	2/6 lbs.	12 lbs.	
n/a	6572	Inferno Wings®	2/6 lbs.	12 lbs.	

Total Cases:
(Min. 5 cs. • Max. 100 cs.)

x \$5.00

Total Rebate:
(Min. \$25 • Max. \$500)

POSTMARKED OR SUBMITTED BY DECEMBER 31, 2023

Send proof of purchases and this completed rebate to:
Brakebush Brothers, Inc.
Attn: 2023 Fall Spotlight Rebate
N4993 6th Drive, Westfield, WI 53964
marketing@brakebush.com

LOCATION INFORMATION:

Name of Operation: _____

Contact Name: _____

Address: _____

City: _____ State: _____ Zip: _____

Phone: _____

E-mail: _____

Distributor Name: _____ Distributor City: _____

Brakebush Representative: _____

**MAKE REBATE CHECK PAYABLE TO AND MAIL TO:
(If different from above)**

Business Name: _____

Mailing Address (P.O. Box): _____

City: _____ State: _____ Zip: _____

TO RECEIVE YOUR REBATE:

- All information must be completely filled out.
- One coupon/redemption per location or headquarters address.
- Valid only for product codes listed on this offer.
- Not valid in conjunction with any other Brakebush offers or discounts on these products. Void where prohibited.
- Offer applies only to foodservice operators. Offer does not apply to Resale, Bid, Contract Managed Accounts, or GPO corporate offices.
- Multi-unit/chain accounts, franchised accounts, schools, colleges, or healthcare accounts limited to 10 locations. Headquarters may submit for multiple locations and request one combined rebate check; however, reporting must show individual store addresses and purchase information. Maximum rebate amount applies to each location.
- Computer generated distributor invoices or tracking reports must accompany rebate form and include Brakebush item numbers, operator & distributor business name and appropriate purchase dates and postmarked by December 31, 2023.
- Brakebush has final decision on the interpretation of the terms and conditions of this program and reserves the right to cancel this program at any time.
- Allow 6-8 weeks for fulfillment.
- Operator must purchase at least 5 cases total of eligible products to receive the minimum rebate amount of \$25. Maximum rebate amount is \$500.
- Offer valid for purchases made between October 1, 2023 to November 30, 2023.



For more tasty menu suggestions visit us at www.brakebush.com/recipes or scan the QR code.



Commercial

Trend *Promotion*

UP TO **\$500**
in value

September 1, 2023 - December 31, 2023

Get inspired at [campbellsfoodservice.com](https://www.campbellsfoodservice.com)

Table of Contents

TREND 1

Down to Earth with Plant-Based

TREND 2

Around the World with Global Flavors

TREND 3

Close to Home with Comfort Foods

How We Chose These Trends

Our chefs identified these three trends based on industry-wide observations and analysis from our own Campbell's Foodservice team, and from our key insight partners. These trends stood out because they have the ability to impact any segment and provide an easy entry point for all types of operators. This accessibility and ease of application are key attributes of the TrendPulse program.

About *Our Chefs*



Chef Gerald Drummond Executive Chef

Chef Gerald Drummond has more than 35 years of experience in the foodservice industry. His expertise includes overseeing operations, facilitating new product launches, leading culinary teams and managing menu development. He uses techniques and inspiration from his culinary background in Italian, Mediterranean, French, Latin and Asian cuisines.



Chef Greg Boggs Senior Chef

Chef Greg's responsibilities include recipe deployment, operator support and the development of the TrendPulse program. Greg is a graduate of the Culinary Institute of America in Hyde Park New York, and has received Certified Chef de Cuisine through the American Culinary Federation. Greg is also an award-winning pit master, placing first in a number of competitions since 2020. He started his culinary career working under James Beard Best Chef Southeast Finalist Jonathan Lundy.

Down to Earth with *Plant-Based*

As wellness and sustainability sentiments continue to fuel the growth of plant-based choices, we're seeing some refreshingly approachable methods for swapping out meat proteins with vegetable alternatives.

Make Room FOR MUSHROOMS

Mushrooms are trending as a versatile way to achieve flavor and texture properties typically associated with meat.

TRUMPET



- Shred to mimic chicken or pork.
- Slice to replace scallops.

LION'S MANE



- Shred to create alternative crab cakes or crab dip.
- Press and sear to imitate a steak.

PORTABELLA



- Use this or its smaller button and cremini versions to replace meat in omelets, pastas, stir-fry dishes, salads, wraps, burgers and more.

TAP INTO THE *Trend*

Try incorporating meatless proteins like mushrooms into **Campbell's**® soups and recipes. It's an easy way to provide plant-based guests with the whole foods and clean-label products they're consistently demanding.

Enhance this [Plant-based Sausage Provençale](#) with button mushrooms as an alternative protein.

Garnish this [Tomato Chickpea & Kale Soup](#) with mushroom scallops.

Top this [Campbell's](#)® Culinary Reserve [Southwest Vegetarian Chili](#) with plant-based chicken made from trumpet mushrooms.



Around the World with *Global Flavors*

Just as the beginning of the pandemic boosted interest in cooking international fare at home, coming out of the pandemic has many consumers realizing that making ethnic dishes is best left to the pros. As we look at the resulting demand for global cuisine away from home, we see a strong focus on three key regions.

Encourage FLAVOR TOURISM

Check out the three global cuisines that are expected to rise in popularity in the U.S. this year.¹ With the street food format also forecasted to accelerate in 2023², we compiled a list of beloved street food dishes from each region.



SOUTHEAST
ASIAN

- Satay
- Banh mi
- Pho



MEDITERRANEAN

- Mezze
- Labneh
- Flatbreads



SOUTH
AMERICAN

- Sopapillas
- Papa Rellenas
- Ceviche

ALSO WORTH WATCHING

Demand for Caribbean fare—including Puerto Rican, Cuban and Dominican cuisine—is predicted to grow in 2023.¹

Between 2021 and 2023, Australian fare saw a 531% year-over-year increase on Grubhub, with South African food not far behind at 294%.³

TAP INTO THE *Trend*

Lean on **Campbell's**® soups and recipes for easy ways to bring one of the above global street food dishes to life.

Use **Campbell's**® *Culinary Reserve Vegetable Pho Broth* as a savory base for a noodle bowl.



Complement a flatbread with this **Campbell's**® *Culinary Reserve Tomato Soup with Roasted Sesame Yogurt*.



Add a ceviche garnish to **Campbell's**® *Culinary Reserve Mexican Street Corn Soup*.



¹ National Restaurant Association, What's Hot 2023 Culinary Forecast

² Technomic

³ <https://get.grubhub.com/blog/2023-food-trends/>

Close to Home with Comfort Foods

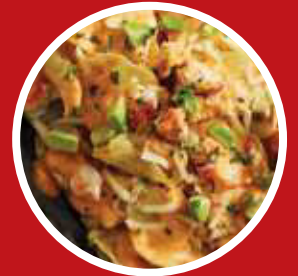
Dishes that evoke feelings of comfort and nostalgia are here for the long haul, but consumers are showing a desire to get a little adventurous within this category. Using our recipe inspiration, let's look at ways to add a bit of boldness to even the most classic of offerings.

So Retro

Signs of consumers' love for comforting throwbacks are everywhere, especially in quick-service restaurants.

- Taco Bell's quirky yet beloved Mexican Pizza sold out within two weeks of being brought back.
- Wendy's Pretzel Pub Cheeseburger made a triumphant return.

LOBSTER NACHOS



This decadent appetizer is the perfect way to elevate a classic comfort food.

ADD A BIT of Bold

CHICKEN & POBLANO MAC & CHEESE

Add a plant-based twist by using a chicken alternative.



CREAMY CHICKEN & WAFFLE SLIDERS

Top off with spicy honey, an ingredient that has grown 26% in the last year.¹



TAP INTO THE

Trend

Get cozy with classic Beef Stroganoff

Serve up indulgence with Campbell's® Culinary Reserve Fully Loaded Baked Potato and Cheddar Soup

Offer a familiar favorite with Campbell's® Culinary Reserve Vegetable Beef with Barley Soup



FROZEN SOUP

Bringing you the flavors of tomorrow, *today.*

Campbell's® Culinary Reserve is the trusted soup portfolio developed for chefs who are passionate about delighting their guests. With a 125-year heritage and a steadfast commitment to innovation, we bring the best of both worlds: a time-trusted partner that delivers on the flavors of tomorrow, today.

HERE'S HOW:

Honoring the past.

With years of experience and expertise in soup, we know what it takes to develop the flavors guests crave—now and in the future.

Looking to the future.

We engage chefs, operators and consumers in product development, we forecast culinary trends, and we use our broad range of industry resources to inform innovation and support our customers.

Putting chefs first.

Our portfolio of more than 60 chef-inspired frozen soup flavors features ready-to-serve and condensed formats for scratch-quality offerings at scale.

— Campbell's —
**CULINARY
RESERVE**



Campbell's® Culinary Reserve Chicken Noodle



Campbell's® Culinary Reserve Aged White Cheddar and Cauliflower Bisque



Campbell's® Culinary Reserve Mexican Street Corn

Trend Promotion UP TO \$500 in value.

Commercial

September 1, 2023 - December 31, 2023

Product Name	Pack/Size	Case Code	Distributor Code	Rebate Amount	TOTAL # of cases X Rebate Amount
CAMPBELL'S® 50 OZ. - CONDENSED SOUPS					
Campbell's® Cream of Chicken					
Campbell's® Cream of Mushroom					
Campbell's® Tomato					
CAMPBELL'S® CULINARY RESERVE - FROZEN SOUPS - POUCH					
Campbell's® Culinary Reserve Roasted Red Pepper & Smoked Gouda Bisque-Ready To Cook					
Campbell's® Culinary Reserve Lobster Bisque with Sherry					
Campbell's® Culinary Reserve Mexican Street Corn					
Campbell's® Culinary Reserve Roasted Poblano & White Cheddar Soup with Tomatillos					
Campbell's® Culinary Reserve Aged White Cheddar & Cauliflower Bisque					
Campbell's® Culinary Reserve Broadway Basil & Tomato Bisque					
Campbell's® Culinary Reserve Creamy Broccoli & Cheddar					
Campbell's® Culinary Reserve Minestrone Soup with Garden Vegetables					
Campbell's® Culinary Reserve Wicked Thai-Style Chicken & Rice					
Campbell's® Culinary Reserve Fully Loaded Baked Potato and Cheddar					
Campbell's® Culinary Reserve Beef & Barley with Vegetable					
Campbell's® Culinary Reserve Broccoli Cheddar					
Campbell's® Culinary Reserve Chicken Noodle					
Campbell's® Culinary Reserve Chicken Tortilla					
Campbell's® Culinary Reserve Loaded Baked Potato - COMING FALL 2023, REFRESHED RECIPE!					
Campbell's® Culinary Reserve Southwest Vegetarian Chili					
Campbell's® Culinary Reserve Tomato Bisque with Basil					
Campbell's® Culinary Reserve Baja Style Chicken Enchilada					
CAMPBELL'S® CULINARY RESERVE CONDENSED SOUPS - TUB					
Campbell's® Culinary Reserve Cheesy Chicken Tortilla					
Campbell's® Culinary Reserve Chicken & Dumplings					
Campbell's® Culinary Reserve Chicken & Dumplings - Retail Ready					
Campbell's® Culinary Reserve Cream of Potato					
Campbell's® Culinary Reserve Cream of Potato with Bacon - Retail Ready					
Campbell's® Culinary Reserve Creamy Tomato Basil Bisque					
Campbell's® Culinary Reserve Creamy Tomato Basil Bisque - Retail Ready					
Campbell's® Culinary Reserve Creole-Style Chicken Gumbo					
Campbell's® Culinary Reserve Creole-Style Chicken Gumbo - Retail Ready					
Campbell's® Culinary Reserve Golden Broccoli Cheese					
Campbell's® Culinary Reserve Homestyle Chicken Noodle					
Campbell's® Culinary Reserve Homestyle Chicken Noodle - Retail Ready					
Campbell's® Culinary Reserve Italian-Style Wedding					
Campbell's® Culinary Reserve Mexicali Tortilla					
Campbell's® Culinary Reserve Mexicali Tortilla - Retail Ready					
Campbell's® Culinary Reserve Minestrone					
Campbell's® Culinary Reserve Minestrone - Retail Ready					

Claims Key

- Made with No-Antibiotics-Ever Chicken Meat
- Gluten Free
- Good Source of...
- Plant-Based
- Reconstituted with Milk
- Full Serving of Fruits or Vegetables
- Vegetarian
- Vegan
- Non-BPA Lining



For recipe inspiration, visit campbellsfoodservice.com/recipes

TrendT3.23_Commercial

Trend Promotion UP TO \$500 in value.

Commercial

September 1, 2023 – December 31, 2023

Product Name	Pack/Size	Case Code	Distributor Code	Rebate Amount	TOTAL # of cases X Rebate Amount
V8® BEVERAGES					
V8® Low Sodium 100% Vegetable Juice - CAN					
V8® Low Sodium 100% Vegetable Juice - PET					
V8® Original 100% Vegetable Juice - CAN					
V8® Original 100% Vegetable Juice - PET					
V8® Original 100% Vegetable Juice - PET					
V8® Original 100% Vegetable Juice - PET					
V8® Splash Berry Blend - PET					
V8® Splash Strawberry Kiwi - PET					
V8® Splash Tropical Blend - PET					
PACIFIC FOODS® PLANT-BASED BEVERAGES					
Pacific Foods® Barista Series Almond Original					
Pacific Foods® Barista Series Coconut Original					
Pacific Foods® Barista Series Oat Original					
Pacific Foods® Barista Series Soy Original					
Pacific Foods® Organic Oat Original					
Pacific Foods® Organic Unsweetened Almond Original					
Pacific Foods® Ultra Soy Original					
PACE®					
Pace® Chunky Salsa - Medium					
Pace® Chunky Salsa - Mild					
Pace® Enchilada Sauce					
Pace® Picante Sauce - Medium					
Pace® Picante Sauce - Mild					

Claims Key

SF Soy Free **V** Vegetarian **VG** Vegan **GF** Gluten Free **O** Organic **PB** Plant-Based **NON GMO** Non-GMO **CA** Carrageenan Free **K** Kosher **FS** Full Serving of Fruits or Vegetables

Name of Operation

First Name Last Name Title

Street Address (no PO Boxes) City State Zip Code

Country Business Phone Number Ext. Email Address

Distributor/City/State/Zip Code

TOTAL CASES	REBATE TOTAL

TERMS AND CONDITIONS:

Send original completed claim form and distributor invoices to:
Campbell Foodservice Rebate Processing
PO Box 750022 • Dept TrendT3.23_Commercial • El Paso, TX 88575-0022

- A. This rebate offer applies to Commercial foodservice operators only.
- B. Checks will be made payable to corporate entities only, and not to individuals.
- C. Offer good only in the U.S.A.
- D. Applies only on eligible Campbell's products purchased between 9/1/2023 – 12/31/2023.
- E. This rebate offer may not be combined with any other offer during the same period.
- F. This rebate cannot be duplicated, assigned or transferred by an operator.
- G. Allow 6–10 weeks for payment of rebate.

By submitting this form, you agree to receive marketing communications, such as product information, services, discount offers and promotions, from Campbell's Foodservice. You may opt out at any time. www.campbellsoupcompany.com/privacy-policy/ Opt Out

- H. Minimum rebate 5 cases; maximum rebate \$500.
- I. Distributors may not redeem on behalf of operators.
- J. Club stores, vending suppliers, c-stores, retail outlets and retail distributors are excluded.
- K. All submissions must be received by 1/31/2024.
- L. Campbell's Foodservice is not responsible for lost, late or misdirected submissions.

Campbell's
FOODSERVICE



For recipe inspiration, visit campbellsfoodservice.com/recipes

TrendT3.23_Commercial

Campbell's
Foodservice



PROMOTION: Up to \$250 in Value!

Are You Ready for Back to School?

Earn Up To \$250

on Pepperidge Farm Goldfish® Grahams

September 1, 2023 - December 31, 2023



Easy, pre-packed and portable.

Goldfish® is the

#1 CRACKER
BRAND

among households
with kids under 12.*

Serve
READY-TO-GO
smiles.





GOLDFISH® GRAHAMS - PROMOTION

Earn Up To \$250 on Pepperidge Farm Goldfish® Grahams • Valid September 1, 2023 - December 31, 2023

Campbell's
Foodservice

GOLDFISH GRAHAMS®							
Number of Cases	Product Name	Case Code	Distributor Code	Pack/Size	Claims	Rebate Amount	Total
	Giant Goldfish ® Grahams - Cinnamon	26830	650338	300/9 oz. bag	V WG	\$3.00	
	Giant Goldfish ® Grahams - Vanilla	26828		300/9 oz. bag	V WG	\$3.00	
	Goldfish ® Baked with Whole Grain Grahams - French Toast	25082		300/1 oz. bag	V WG	\$4.00	
	Goldfish ® Baked with Whole Grain Grahams - Honey Bun	25083		300/1 oz. bag	V WG	\$4.00	

Don't forget, November 25th National Parfait Day, be sure to stock up!

SMILING YOGURT PARFAITS made with **GOLDFISH® GRAHAMS** baked with **WHOLE GRAIN FRENCH TOAST**

[Click for Recipe](#)

Claims Key:

- V** Vegetarian
- WG** Whole Grain

Total Cases	Rebate Total

- 🐟 **Whole grain-rich**
- 🐟 **1 oz. grain equivalent per package**
- 🐟 **No artificial flavors or preservatives**
- 🐟 **Smart Snack compliant**
- 🐟 **0g trans fat per serving**

Name of Operation _____

First Name _____ Last Name _____ Title _____

Street Address (no PO Boxes) _____ City _____ State _____ Zip Code _____

Country _____ Business Phone Number _____ Ext. _____ Email Address _____

Distributor _____ City _____ State _____ Zip Code _____

TERMS AND CONDITIONS:

Email original completed claim form and distributor invoices to:
Campbell Foodservice Rebate Processing
PO Box 750022, Dept K12 T3.23_Grahams, El Paso, TX 88575-0022 or
email to CFSRebatesInfo@apfco.com

By submitting this form, you agree to receive marketing communications, such as product information, services, discount offers and promotions, from Campbell's Foodservice. You may opt out at any time. www.campbellsoupcompany.com/privacy-policy/ Opt Out

- A. This rebate offer applies only to K-12 foodservice operators.
- B. Rebate will be provided in the form of a check. Check will be made payable to corporate entities only, and not to individuals.
- C. Applies only to eligible Goldfish® Grahams product listed above purchased 09/1/2023 - 12/31/2023.
- D. Limit of one rebate claim per operator location.
- E. Minimum Rebate: 5 cases. Maximum Rebate \$250.
- F. Operators should save copies of distributor invoices (showing eligible product purchased) for submission with this original claim form. No handwritten invoices will be accepted. Must submit either original invoice, copy of original invoice or a velocity report that includes all of the following: distributor name and/or logo; operator name and customer number; valid order dates; eligible product code.

- G. All submissions must be postmarked by 01/31/2024.
- H. Campbell's® Foodservice is not responsible for lost, late or misdirected submissions.
- I. This rebate offer may not be combined with any other offer on the same item
- J. This rebate cannot be assigned or transferred by an operator.
- K. Distributors may not redeem on behalf of operators.
- M. Rebate is valid for purchases made from foodservice distributors only.
- N. Allow 6-10 weeks for payment of rebate.
- P. Club stores, C stores, retail outlets and retail distributors are excluded.



For recipe inspiration, visit campbellsfoodservice.com/brands/goldfish

K12 T3.23_Grahams

Kettle Promotion

Campbell's
FOODSERVICE

Promotion Dates: July 1, 2023 - December 31, 2023

Campbell's® knows the right equipment can enhance soup offerings and increase sales.

When it comes to selling
soup, trust the *expert*.

During the time of the promotion, when a customer purchases a combined 15 cases of eligible **Campbell's®** soups, not previously purchased in the last 90 days, will you be eligible to receive a 10.5 qt. soup kettle at NO CHARGE!

(1) One Kettle Per Account



New Campbell's® Culinary Reserve Baja-Style Chicken Enchilada

The bold taste of Baja comes together in this soup with a blend of southwest spices, masa harina, & cilantro loaded with corn, jalapeno peppers, tomatoes, and onions.

Product Code: 28744



Product Name	Case Code	Distributor Code	Pack/Size
Campbell's® Culinary Reserve Aged White Cheddar & Cauliflower Bisque	28265	n/a	4/4 LB Pouch
Campbell's® Culinary Reserve Baja-Style Chicken Enchilada NEW!	28744	n/a	4/4 LB Pouch
Campbell's® Culinary Reserve Broadway Basil & Tomato Bisque	21081	n/a	4/4 LB Pouch
Campbell's® Culinary Reserve Broccoli Cheddar	20301	661014	4/4 LB Pouch
Campbell's® Culinary Reserve Chicken Noodle	20303	661008	4/4 LB Pouch
Campbell's® Culinary Reserve Loaded Baked Potato	20305	661002	4/4 LB Pouch
Campbell's® Culinary Reserve Lobster Bisque w Sherry	21068	662591	4/4 LB Pouch
Campbell's® Culinary Reserve Mexican Street Corn - RTC	27926	662570	4/4 LB Pouch
Campbell's® Culinary Reserve Minestrone Soup with Garden Vegetables	21093	661010	4/4 LB Pouch
Campbell's® Culinary Reserve Roasted Poblano & white Cheddar Soup with Tomatillos	26832	n/a	4/4 LB Pouch
Campbell's® Culinary Reserve Roasted Red Pepper & Smoked Gouda Bisque - RTC	16835	662970	4/4 LB Pouch
Campbell's® Culinary Reserve Savory Beef Chili w Spicy Pepper Trio - RTC	23424	661018	4/4 LB Pouch
Campbell's® Culinary Reserve Tequila-Spiked Fiesta Chicken	21076	n/a	4/4 LB Pouch
Campbell's® Culinary Reserve Tomato Bisque with Basil	24878	661022	4/4 LB Pouch
Campbell's® Culinary Reserve Vegan Vegetable	20600	661005	4/4 LB Pouch
Campbell's® Culinary Reserve Wicked Thai-Style Chicken & Rice	20805	661334	4/4 LB Pouch

Please Contact Your **Campbell's®** Sales Representative For Details.



Visit campbellsfoodservice.com to learn more



Angela Mia® Is Back In Stock And It's The PERFECT TIME TO STOCK UP!

Purchase these Angela Mia products and save up to \$200!

HERE'S HOW TO GET YOUR OPERATOR SAVINGS REBATE:

- 1 Purchase the qualifying products listed on back from your distributor between Aug. 28 and Nov. 24, 2023.
- 2 All rebates must be redeemed by Dec. 24, 2023.
- 3 To redeem by mail, complete the rebate form below and submit along with proof of purchase (copies of distributor invoices or velocity reports) to the address indicated. To redeem online, simply upload your proof of purchase to fspromos4u.com/conagra, access code AMBACKIN2023.
- 4 Receive the specified rebate per case on the product(s) listed, up to a total rebate amount of \$200. Minimum rebate offer is \$2.
- 5 Your rebate check will arrive within 4-6 weeks of submission. For express 2-4 week processing, submit online.



REBATE SPECIFICATIONS

Chains must participate on an individual outlet basis. Rebate offer is limited to 100 cases per operator. Cases redeemed against this offer may not be used to redeem against any other rebate offers. Partial cases not accepted. Rebates cannot be assigned or transferred. Offer valid for foodservice operators only; suppliers or distributors cannot redeem rebates for operators. We reserve the right to audit requests for payment and reserve the right to cancel this offer at any time. This rebate may be mechanically reproduced or photocopied but not altered from its original format. All rebates must be postmarked by Dec. 24, 2023. VOID IF RESTRICTED OR PROHIBITED BY LAW.

REBATE OFFER

of cases _____ Total Rebate _____
 x \$2.00 per case = _____
 (Maximum Rebate \$200 - Minimum \$2)

Complete the requested information on this form and mail with a copy of your distributor invoice(s) to:

Angela Mia Back in Stock Rebate
Conagra Foodservice
P.O. Box 2025 - FS-2547
Brownsdale, MN 55918

Must be postmarked by Dec. 24, 2023.
Only one redemption per establishment.

My foodservice operation can best be described as:

- Casual Dining
- Family Dining
- QSR
- Recreation/Entertainment
- Convenience Store
- Business Dining
- College or University
- Vending/OCS
- Hospital
- Long-Term Care
- K-12 School
- Bar/Tavern
- Sandwich/Bakery Café
- Catering
- Other (specify) _____

Day parts served (check all that apply):

- Breakfast
- Lunch
- Dinner
- Snacks/Takeout

Number of Units: _____

Seasonal Operation: Yes No Seasonal Period: _____

PLEASE PRINT LEGIBLY

Name of Establishment _____

Your Name _____

Street Address _____

City _____ State _____ ZIP _____

Business Phone () _____ Fax () _____

Email _____

By providing an email address, operator gives permission for us to send product and program information via email.

Primary Distributor _____ Distributor Rep Name _____

Primary Distributor City _____

Brokerage _____ Broker Rep Name _____



conagrafoodservice.com





Save up to \$200 on the products listed below.
Offer valid Aug. 28-Nov. 24, 2023.

QUALIFYING PRODUCTS

Product Code	Product Description	Pack Size	Rebate Amount
27000 38064	Angela Mia® Crushed Tomatoes, #10 Can	6/102 oz.	\$2.00
27000 39125	Angela Mia® Marinara Sauce, #10 Can	6/104 oz.	\$2.00
27000 37854	Angela Mia® Diced Tomatoes in Juice, #10 Can	6/102.5 oz	\$2.00



QUESTIONS?

CALL 800-357-6543
OR VISIT
conagrafoodservice.com



NEW!



Bulkpak Cereal Rebate

Save up to \$1,500*

\$10 per case on Bulkpak Cereal

*150 cases/\$1,500 maximum after rebate

Offer valid only for operators in the following segments:
College & University, Healthcare, Retirement Living,
Business & Industry and Lodging Operations

September 1, 2023 - November 30, 2023

Eligible Products	
Product Code	Product Information
Bulkpak Cereal	
100-16000-21113-8	NEW! Honey Cheerios™ Bulkpak
100-16000-11977-9	Cheerios™ Bulkpak
100-16000-38391-0	Chocolate Chex™ Cereal, Bulkpak
100-16000-11813-0	Cinnamon Toast Crunch™ Bulkpak
100-16000-11999-1	Cocoa Puffs™ Bulkpak
100-16000-18791-4	Cookie Crisp™ Bulkpak
100-16000-13326-3	Corn Chex™ Bulkpak
100-16000-11976-2	Country Corn Flakes™ Bulkpak
100-16000-11989-2	Golden Grahams™ Bulkpak
100-16000-11988-5	Honey Nut Cheerios™ Bulkpak
100-16000-11965-6	Kix™ Bulkpak
100-16000-11998-4	Lucky Charms™ Bulkpak
100-16000-13255-6	Reese's Puffs™ Bulkpak
100-16000-13325-6	Rice Chex™ Bulkpak
100-16000-11663-1	Total™ Raisin Bran Bulkpak
100-16000-11963-2	Trix™ Bulkpak

Save \$10 per case on Bulkpak Cereal up to \$1,500 (after rebate)

VALID PURCHASE DATES: September 1, 2023 - November 30, 2023

Buy and start saving: Save \$10 off per case of eligible bulk cereal products. 150 case/\$1,500 maximum

OPERATOR INFORMATION

All fields required for redemption.

(Check ONE) I am a Foodservice Operator in the following segment:

- College & University Lodging B&I
 Healthcare Retirement Living

Establishment

Contact Name

Contact Title

Mailing Address

City State Zip

Phone

Email Address*

Distributor House

Distributor City Distributor State

DSR Name

DSR Email*

*Provide email to receive additional offers and communications from General Mills Foodservice.

CALCULATE YOUR REBATE

Product Type	# of cases	\$ per case	Total
--------------	------------	-------------	-------

Bulkpak Cereal	x \$ 10.00	= \$ 0.00
----------------	-------	------------	-----------

Total Cases =	0	Total Rebate = \$ 0.00
	<small>(150 cases maximum)</small>	<small>(\$1,500 maximum)</small>

For faster processing, and tracking of rebate, submit online.
Follow QR code to access, or visit fspromos4u.com/GeneralMills.



TO RECEIVE YOUR REBATE

Purchase qualifying products between September 1, 2023 - November 30, 2023.

Rebate must be postmarked or submitted online before December 30, 2023.

Offer valid only for C&U, Healthcare, Retirement Living, B&I and Lodging Operations.

Open to GPOs and Independent Operators. Offer not available to operators buying products under bid or with Food Management Company contract pricing.

Limit one Bulkpak Cereal rebate submission per operation during this period.

Submit online for faster processing or fill out this form completely and mail it in. Allow 4 - 6 weeks for processing from the time the rebate is received.

Attach distributor invoices or recaps with purchases of qualifying products circled or highlighted. Identifying General Mills code or brand name must be included on the invoice.

If you purchase from multiple distributors, please attach all distributor invoices/recaps to one rebate form (do not submit one rebate form for each distributor invoice).

Distributor recaps must include distributor name and/or logo, valid purchase dates and establishment name. Establishment name on this form must match name on submitted invoice(s).

This offer cannot be combined with any other offer.

Handwritten invoices will not be accepted.

No bulk or third party submissions will be accepted.

This certificate cannot be assigned or transferred. Offer good only in the USA and is void where taxed, restricted or prohibited by law.

General Mills Foodservice reserves the right to audit request for payment, discontinue or revise this offer at anytime.

MAIL COMPLETED FORM WITH PROOFS OF PURCHASE TO:

General Mills Foodservice
F24Q2BULK
PO Box 1003 | Dexter, MN 55926

Must be postmarked on or
before:
December 30, 2023

REDEEM ONLINE AT: fspromos4u.com/GeneralMills

Quick Access Code: F24Q2BULK

Cheerios



NATURE VALLEY



generalmillscf@reply4info.com
1-888-882-9860



C-STORE FOODSERVICE REBATE

Save up to \$300*
up to \$12 per case

*25 case/\$300 maximum after rebate

September 1, 2023 - November 30, 2023

QUALIFYING PRODUCT CATEGORIES:

\$12 QUALIFYING PRODUCTS	\$10 QUALIFYING PRODUCTS	\$7 QUALIFYING PRODUCTS	\$2.50 QUALIFYING PRODUCTS	\$2 QUALIFYING PRODUCTS
<ul style="list-style-type: none"> Pillsbury™ Frozen Biscuit Dough 	<ul style="list-style-type: none"> Pillsbury™ Cinnamon Rolls & Twirls Pillsbury™ Scones Pillsbury™ Puff Pastry Pillsbury™ Pie Dough Pillsbury™ Muffin Batters Pillsbury™ Croissants 	<ul style="list-style-type: none"> Pillsbury™ Stuffed Waffle Sausage Egg & Cheese Yoplait® ParfaitPro®/Nature Valley™ Granola Kit** 	<ul style="list-style-type: none"> Pillsbury™ Thaw and Serve Belgian Style Waffle Carrier 	<ul style="list-style-type: none"> Pillsbury™ Frozen Baked Biscuits

**Yogurt items not valid in the following states: CA, LA, MN, ND, NJ, NV, TN and WI

Save up to \$300 up to \$12 per case on qualifying products (after rebate)

VALID PURCHASE DATES: September 1, 2023 - November 30, 2023

Buy and start saving: Save up to \$12 per case on eligible products. 25 case / \$300 maximum

OPERATOR INFORMATION

All fields required for redemption

CHECK HERE:

Yes, I am a C-Store Operator

Establishment

Contact Name

Contact Title

Mailing Address

City State Zip

Phone

Email Address*

Distributor House

Distributor City Distributor State

DSR Name

DSR Email*

*Provide email to receive additional offers and communications from General Mills Foodservice.

CALCULATE YOUR REBATE

Product Type	# of cases	\$ per case	Total
\$2.00 Qualifying Products	x \$ 2.00 =	\$ 0.00
\$2.50 Qualifying Products	x \$ 2.50 =	\$ 0.00
\$7.00 Qualifying Products	x \$ 7.00 =	\$ 0.00
\$10.00 Qualifying Products	x \$ 10.00 =	\$ 0.00
\$12.00 Qualifying Products	x \$ 12.00 =	\$ 0.00
Total Cases =	0 <i>(25 case maximum)</i>	Total Rebate =	0.00 <i>(\$300 maximum)</i>

TO RECEIVE YOUR REBATE

Purchase qualifying products between September 1, 2023 - November 30, 2023.

Rebate must be postmarked or submitted online before December 30, 2023.

Offer valid for C-store Operators only.

Not available to operators buying products under bid or contract pricing.

Limit one C-store rebate submission per operation during this period.

Submit online for faster processing or fill out this form completely and mail it in. Allow 4- 6 weeks for processing from the time the rebate is received.

Attach distributor invoices or recaps with purchases of qualifying products circled or highlighted. Identifying General Mills code or brand name must be included on invoice.

If you purchase from multiple distributors, please attach all distributor invoices/recaps to one rebate form (please do not submit one rebate form for each distributor invoice).

Distributor recaps must include distributor name and/or logo, valid purchase dates and establishment name. Establishment name on this form must match name on submitted invoice(s).

This offer cannot be combined with any other offer.

Handwritten invoices will not be accepted.

No bulk or third party submissions will be accepted.

Yogurt items not valid in the following states: CA, LA, MN, ND, NJ, NV, TN and WI

This certificate cannot be assigned or transferred. Offer good only in the USA and is void where taxed, restricted or prohibited by law.

General Mills Foodservice reserves the right to audit request for payment, discontinue or revise this offer at anytime.

MAIL COMPLETED FORM WITH PROOFS OF PURCHASE TO:

General Mills Foodservice
F24Q2CST
PO Box 1003, Dexter, MN 55926

Must be postmarked on or
before:
December 30, 2023

REDEEM ONLINE AT: fspromos4u.com/GeneralMills

Quick Access Code: F24Q2CST



generalmillscf@reply4info.com
1-888-882-9860



Save up to \$8

per case on Gold Medal™ Mixes!

20 cases/\$160 maximum after rebate

September 1, 2023 - February 29, 2024

Eligible Products		Eligible Products	
Code	Product Information	Code	Product Information
Gold Medal™ Biscuit Mix		Gold Medal™ Dessert Mix	
100-16000-11412-5	Biscuit Mix 5lb	100-16000-11312-8	Chocolate Brownie Mix 6lb
100-16000-11765-2	Biscuit Mix Buttermilk 5lb	100-16000-11240-4	Lemon Bar Mix 5lb
100-16000-11455-2	Cornbread Mix 5 lb Honey Cornbread ZT	100-16000-11325-8	Sweet Rewards® Lowfat Chocolate Brownie Mix 6lb
Gold Medal™ Muffin Mix		100-16000-11195-7	Angel Food Cake Mix 1lb
100-16000-11432-3	Basic Muffin Mix 5lb	100-16000-11129-2	Carrot Cake Mix & Cream Cheese Icing 5lb
100-16000-11547-4	Blueberry Muffin Mix 4.87lb	100-16000-11116-2	Chocolate Chocolate Cake Mix 5lb
100-16000-11422-4	Cornbread Mix 5 lb Southern Style ZT	100-16000-11430-9	Cinnamon Streusel Coffee Cake Mix 4.66lb
100-16000-11442-2	Corn Muffin Mix 5lb	100-16000-11112-4	Devil's Food Cake Mix 5lb
100-16000-11452-1	Honey 'N Bran Muffin Mix 5lb	100-16000-12219-9	SuperMoist® White Cake Mix 4.5lb
100-16000-11447-7	Oat Bran Muffin Mix 5lb	100-16000-12232-8	SuperMoist® Yellow Cake Mix 4.5lb
100-16000-11564-1	Original Variety Muffin Mix 5lb ZT	100-16000-11132-2	White Cake Mix 5lb
100-16000-11560-3	Sweet Rewards® Lowfat Variety Muffin Mix 4.5lb	100-16000-11152-0	Yellow Cake Mix 5lb
100-16000-11544-3	Variety Muffin Mix 5lb	100-16000-12217-5	SuperMoist® Devil's Food Cake Mix 4.5lb
100-16000-31529-4	Whole Grain Variety Muffin Mix 5lb	100-16000-11142-1	Spice Cake Mix 5lb
Gold Medal™ Pancake and Waffle Mix		100-16000-11162-9	Pound Cake Mix 5lb
100-16000-10832-2	Golden Valley Complete Buttermilk Pancake Mix 5lb	Gold Medal™ Quick Rise Roll	
100-16000-11805-5	Belgian Waffle Mix 3.12lb	100-16000-11615-0	Soft Roll Mix Quick Rise 5 lb
100-16000-11827-7	Complete Buttermilk Pancake Mix 5lb	100-16000-11614-3	Sweet Roll Mix Quick Rise 5 lb
100-16000-11030-1	Complete Pancake Mix 5lb		
100-16000-11834-5	Complete Waffle Mix 5lb		
100-16000-31527-0	Whole Grain Complete Pancake Mix 5lb		

Save up to \$160 up to \$8 per case on Gold Medal™ Mixes (after rebate)

VALID PURCHASE DATES: September 1, 2023 - February 29, 2024

Buy and start saving: Save up to \$8 per case on eligible 5lb Gold Medal Mixes. 20 case / \$160 maximum

OPERATOR INFORMATION

All fields required for redemption.

(Check ONE) I am a Foodservice Operator in the following segment:

- Restaurant
 C-Store
 College & University
 Lodging
 K-12
 B&I
 Healthcare
 Independent Bakery
 Other

Establishment

Contact Name

Contact Title

Mailing Address

City State Zip

Phone

Email Address*

Distributor House

Distributor City Distributor State

DSR Name

DSR Email*

*Provide email to receive additional offers and communications from General Mills Foodservice.

CALCULATE YOUR REBATE

Product Type	# of cases	\$ per case	Total
Gold Medal™ Biscuit Mix	x \$ 8.00	= \$ 0.00
Gold Medal™ Muffin Mix	x \$ 8.00	= \$ 0.00
Gold Medal™ Pancake & Waffle Mix	x \$ 8.00	= \$ 0.00
Gold Medal™ Dessert Mix	x \$ 4.00	= \$ 0.00
Gold Medal™ Quick Rise Roll	x \$ 4.00	= \$ 0.00
Total Cases =	0	Total Rebate = \$ 0.00	
	<small>(20 case maximum)</small>	<small>(\$80-\$160 maximum)</small>	

TO RECEIVE YOUR REBATE

Purchase qualifying products between September 1, 2023 - February 29, 2024.

Rebate must be postmarked or submitted online before March 30, 2023.

Offer not available to Supermarkets.

Offer valid for Foodservice Operators only. Open to GPOs and Independent Operators. Offer not available to operators buying products under bid or with Food Management Company contract pricing.

Limit one Gold Medal™ 5lb Mix rebate submission per operation during this period.

Submit online for faster processing or fill out this form completely and mail it in. Allow 4 - 6 weeks for processing from the time the rebate is received.

Attach distributor invoices or recaps with purchases of qualifying products circled or highlighted. Identifying General Mills code or brand name must be included on the invoice.

If you purchase from multiple distributors, please attach all distributor invoices/recaps to one rebate form (do not submit one rebate form for each distributor invoice).

Distributor recaps must include distributor name and/or logo, valid purchase dates and establishment name. Establishment name on this form must match name on submitted invoice(s).

This offer cannot be combined with any other offer.

Handwritten invoices will not be accepted.

No bulk or third party submissions will be accepted.

This certificate cannot be assigned or transferred. Offer good only in the USA and is void where taxed, restricted or prohibited by law.

General Mills Foodservice reserves the right to audit request for payment, discontinue or revise this offer at anytime.

MAIL COMPLETED FORM WITH PROOFS OF PURCHASE TO:

General Mills Foodservice
F24MIX5
PO Box 1003, Dexter, MN 55926

**Must be postmarked on or before:
March 30, 2024**

REDEEM ONLINE AT: fspromos4u.com/GeneralMills

Quick Access Code: F24MIX5



generalmillscf@reply4info.com
1-888-882-9860

K-12

K-12 BUY MORE GET MORE REBATE

Save up to \$3 per case

500 cases/\$1,500 maximum after rebate

August 1, 2023 - November 30, 2023



Eligible Product Platforms

Code	Product Information	Code	Product Information
FROZEN BREAKFAST		Chex™ PRODUCTS	
100-16000-17365-8	Nature Valley™ Oatmeal Round, Apple Cinnamon	100-16000-31933-9	Simply Chex™ Snack Mix, Chocolate Caramel, 1.03 oz, 60 ct
100-16000-17364-1	Nature Valley™ Oatmeal Round, Banana Chocolate Chip	100-16000-31937-7	Simply Chex™ Snack Mix, 1.03 oz, Strawberry Yogurt, 60 ct
100-18000-11032-9	Pillsbury™ Soft Filled Cocoa Puffs™ Bar	GRAIN PRODUCTS	
100-18000-10978-1	Pillsbury™ Soft Filled Cinnamon Toast Crunch Bar	100-16000-45977-6	Betty Crocker™ Oatmeal Bar Chocolate Chip
100-18000-49979-0	Pillsbury™ Filled Crescent, Chocolate	100-16000-45566-2	Betty Crocker™ Oatmeal Bar Double Chocolate
100-18000-49978-3	Pillsbury™ Filled Crescent, Grape	100-16000-11590-0	Nature Valley™ Chewy Granola Bar Chocolate Chip 120 ct
100-18000-27852-4	Frudel Strudel™ 2.29 oz Apple	100-16000-11591-7	Nature Valley™ Chewy Granola Bar Chocolate Chip & Oatmeal Raisin 120 ct
100-18000-27851-7	Frudel Strudel™ 2.29 oz Cherry	100-16000-11582-5	Nature Valley™ Crunchy Granola Oats 'N Honey 144 ct
100-18000-38399-0	Pillsbury™ Mini Bagels, Cinnamon Creamy Cheese, 72ct, 2.43 oz	100-16000-33530-8	Nature Valley™ Crunchy Granola Bar, Oats 'n Honey, 1.5oz, 18 ct
100-18000-38413-3	Pillsbury™ Mini Bagels, Strawberry Creamy Cheese, 72ct, 2.43 oz	100-16000-11584-9	Nature Valley™ Crunchy Granola Peanut Butter 144 ct
100-18000-33686-6	Pillsbury™ Frozen Cinnamon Rolls 72 ct Mini Cinnis, K12	100-16000-33550-6	Nature Valley™ Crunchy Granola Bar, Peanut Butter, 1.5oz, 18 ct
100-18000-37309-0	Pillsbury™ Mini French Toast 2.64 oz Cinnamon Rush	100-16000-48255-2	Nature Valley™ Crisp, Chocolate
100-18000-37308-3	Pillsbury™ Mini French Toast 2.64 oz Triple Berry Blast	100-16000-48256-9	Nature Valley™ Crisp, Cinnamon
100-18000-32264-7	Pillsbury™ Frozen Mini Waffles, Blueberry Bash, 2.47 oz	100-16000-15120-5	Nature Valley™ Chewy Trail Mix Bar Fruit & Nut 16 ct
100-18000-32265-4	Pillsbury™ Frozen Mini Waffles, 2.47 oz, Maple Madness	100-16000-45576-1	Cinnamon Toast Crunch™ Cereal Bar
FROZEN LUNCH		100-16000-45577-8	Cocoa Puffs™ Cereal Bar
100-18000-12317-6	Pillsbury™ Cheesy Pull-Apart, Italian Cheese Garlic	100-16000-31913-1	Golden Grahams™ Cereal Bar
100-18000-12316-9	Pillsbury™ Cheesy Pull-Apart, Southwest	100-16000-31914-8	Team Cheerios™ Cereal Bar, Strawberry
FRUIT-FLAVORED SNACKS		100-16000-31915-5	Trix™ Cereal Bar
100-16000-11561-0	Fruit Roll-Ups™ Crazy Colors 96 ct	100-16000-16854-8	Cinnamon Toast Crunch™ Cereal Bar (48 ct) 2.5 oz
100-16000-29162-8	Fruit Roll-Ups™ Strawberry Reduced Sugar 96 ct	100-16000-16856-2	Peach Cheerios™ Cereal Bar (48 ct) 2.5 oz
100-16000-11566-5	Fruit Roll-Ups™ Blastin' Berry Hot Colors 96 ct	100-16000-16853-1	Lucky Charms™ Cereal Bar (48 ct) 2.5 oz
100-16000-11510-8	Fruit Shapes™ Scooby-Doo 96 ct	ANNIE'S™ PRODUCTS	
100-16000-47954-5	Mott's® Fruit Snacks, Assorted Fruit	000-135620-0236-8	Annie's™ Organic, Bunny Grahams™, Honey, 1.25 oz
100-16000-47953-8	Mott's® Fruit Snacks, Mixed Berry	000-13562-00237-5	Annie's™ Organic, Bunny Grahams™, Snack Friends, 1.25 oz
Chex™ PRODUCTS		100-13562-49828-1	Annie's™ K-12 Organic, Cheddar Bunnies™, 0.75 oz
100-16000-31932-2	Simply Chex™ Snack Mix, Cheddar, 0.92 oz, 60 ct		

Save up to \$3

per case on K-12 products
(after rebate)

VALID PURCHASE DATES: August 1, 2023 - November 30, 2023

Buy and start saving: Choose from at least two qualifying platforms listed. You must purchase a minimum of 20 cases for your schools.

OPERATOR INFORMATION

Check Here: Yes, I am a K-12 Foodservice Operator or USDA Child Nutrition Program Operator

School District Name

Contact Name

Contact Title

Mailing Address

P.O. BOX (no P.O. Box unless a physical address is provided above)

City State Zip

Phone

Email Address
To receive additional offers and communications from General Mills Foodservice.

Co-op/Buying Group/GPO

Distributor House

Distributor City Distributor State

DSR Name

DSR Email
To receive additional offers and communications from General Mills Foodservice.

CALCULATE YOUR REBATE

Product Type	# of cases	\$ per case	Total
Two Different Qualifying Platforms	x \$ 1.50	= \$ 0.00
Three Different Qualifying Platforms	x \$ 2.00	= \$ 0.00
Four Different Qualifying Platforms	x \$ 2.50	= \$ 0.00
Five plus Different Qualifying Platforms	x \$ 3.00	= \$ 0.00

Total Cases = 0 **Total Rebate = \$ 0.00**
20 case minimum
500 case maximum (\$1,500 maximum)

PURCHASE A MINIMUM OF 2 QUALIFYING PLATFORMS AND 20 CASES.

TO RECEIVE YOUR REBATE

Purchase qualifying products between August 1, 2023 - November 30, 2023.

Rebate form must be postmarked or submitted online on or before December 30, 2023.

Offer Valid for K-12 Foodservice Operators and USDA Child Nutrition Programs only.

Open to Group Purchasing Organization Operators. Offer not available to operators buying products with Food Management Company contract pricing.

Limit one K-12 Buy More Get More rebate submission per district during this period. School Districts: Collect for all schools in your district and send in only one submission.

Fill out this form completely and mail or submit Online. Allow 4-6 weeks for processing from the time the rebate is received.

No PO Boxes unless accompanied by a physical address.

Attach distributor invoices or recaps with purchases of qualifying products circled or highlighted. Identifying General Mills code or brand name must be included on invoice.

Distributor recaps must include distributor logo, valid purchase dates and operator name. Operator or Establishment name on this form must match name on submitted invoice(s).

This offer cannot be combined with any other offer. Handwritten invoices will not be accepted. No bulk or third party submission will be accepted.

This certificate cannot be assigned or transferred. Offer good only in the U.S.A. and is void where taxed, restricted or prohibited by law.

General Mills Foodservice reserves the right to audit request for payment, discontinue or revise this offer at any time.

MAIL COMPLETED FORM WITH PROOFS OF PURCHASE TO:

General Mills Foodservice
F24H1BMGM
PO Box 1003, Dexter, MN 55926

**Must be postmarked on or
before:
December 30, 2023**

REDEEM ONLINE AT: fspromos4u.com/GeneralMills

Quick Access Code: F24H1BMGM



generalmillscf@reply4info.com
1-888-882-9860



K-12

K-12 COFFEE SHOP REBATE

Save up to \$3
per case

500 cases/\$1,500 maximum after rebate

August 1, 2023 - November 30, 2023

Eligible Product Platforms

Pillsbury™ Biscuits

100-94562-32267-7	Pillsbury™ Whole Grain-Rich Biscuit Dough 2.51 oz
100-94562-10752-6	Pillsbury™ Southern Style Easy Split™ Biscuit Dough 2.51 oz
100-94562-32268-4	Pillsbury™ Whole Grain-Rich Biscuit Dough Easy Split™ 2.51 oz
100-94562-06236-8	Pillsbury™ Baked Biscuit Golden Buttermilk Easy Split™ 2.25 oz
100-94562-32271-4	Pillsbury™ Whole Grain-Rich Baked Biscuit Easy Split™ 2.0 oz
100-94562-32272-1	Pillsbury™ Whole Grain-Rich Baked Biscuit Mini 1.0 oz
100-94562-32391-9	Pillsbury™ Baked Biscuit Reduced Sodium Golden Buttermilk Easy Split™ 2.25 oz
100-94562-31524-2	Pillsbury™ Frozen Biscuit Easy Split™ Southern Style 2.2 oz
100-94562-32269-1	Pillsbury™ Whole Grain-Rich Biscuit Dough Mini 1.25 oz

Pillsbury™ K12 Cinnamon Roll Dough

000-94562-11111-0	Pillsbury™ K12 Freezer-to-Oven Whole Grain Cinnamon Roll Dough, 2.7 oz
-------------------	--

Pillsbury™ Place & Bake™ Muffin Tops

100-94562-11113-4	Pillsbury™ Place & Bake Whole Grain Muffin Top, Blueberry
100-94562-11114-1	Pillsbury™ Place & Bake Whole Grain Muffin Top, Chocolate Chip

Yoplait® Yogurt

100-70470-31077-7	Yoplait® Trix Yogurt 4 oz Triple Cherry
000-70470-17725-0	Yoplait® Trix Yogurt 4 oz Raspberry Rainbow
000-70470-17726-7	Yoplait® Trix Yogurt 4 oz Strawberry Banana Blast
100-70470-16632-9	Yoplait® ParfaitPro Yogurt, Lowfat, 64 oz, Vanilla, 6ct
100-70470-16067-9	Yoplait® ParfaitPro Yogurt, Blueberry, 64 oz
100-70470-16631-2	Yoplait® ParfaitPro Yogurt, Lowfat, 64 oz, Strawberry, 6ct

Save up to \$3

per case on K-12 products
(after rebate)

VALID PURCHASE DATES: August 1, 2023 - November 30, 2023

Buy and start saving: Choose from at least two qualifying platforms listed. You must purchase a minimum of 20 cases for your schools.

OPERATOR INFORMATION

Check Here: Yes, I am a K-12 Foodservice Operator or USDA Child Nutrition Program Operator

School District Name

Contact Name

Contact Title

Mailing Address

P.O. BOX (no P.O. Box unless a physical address is provided above)

City State Zip

Phone

Email Address
To receive additional offers and communications from General Mills Foodservice.

Co-op/Buying Group/GPO

Distributor House

Distributor City Distributor State

DSR Name

DSR Email
To receive additional offers and communications from General Mills Foodservice.

CALCULATE YOUR REBATE

Product Type	# of cases	\$ per case	Total
Two Different Qualifying Platforms	x \$ 2.00	= \$ 0.00
Three Different Qualifying Platforms	x \$ 2.50	= \$ 0.00
Four Different Qualifying Platforms	x \$ 3.00	= \$ 0.00

PURCHASE A MINIMUM OF 2 QUALIFYING PLATFORMS AND 20 CASES.

Total Cases =	0	Total Rebate = \$ 0.00
	<small>(20 case minimum 500 case maximum)</small>	<small>(\$1,500 maximum)</small>

TO RECEIVE YOUR REBATE

Purchase qualifying products between August 1, 2023 - November 30, 2023.

Rebate form must be postmarked or submitted online on or before December 30, 2023.

Offer Valid for K-12 Foodservice Operators and USDA Child Nutrition Programs only.

Limit one K-12 Coffee Shop per district during this period. School Districts: Collect for all schools in your district and send in only one submission.

Open to GPO operators. Offer not available to operators buying products with Food Management Company contract pricing.

Fill out this form completely and mail or submit online. Allow 4-6 weeks for processing from the time the rebate is received.

No PO Boxes unless accompanied by a physical address.

Attach distributor invoices or recaps with purchases of qualifying products circled or highlighted. Identifying General Mills code or brand name must be included on invoice.

Distributor recaps must include distributor logo, valid purchase dates and operator name. Operator or Establishment name on this form must match name on submitted invoice(s).

This offer cannot be combined with any other offer. Handwritten invoices will not be accepted. No bulk or third party submission will be accepted.

This certificate cannot be assigned or transferred. Offer good only in the U.S.A. and is void where taxed, restricted or prohibited by law.

General Mills Foodservice reserves the right to audit request for payment, discontinue or revise this offer at any time.

Yogurt portion not available in the following states due to dairy laws: CA, LA, MN, ND, NJ, NV, TN, and WI.

MAIL COMPLETED FORM WITH PROOFS OF PURCHASE TO:

General Mills Foodservice
F24H1CSR
PO Box 1003, Dexter, MN 55926

**Must be postmarked on or before:
December 30, 2023**

REDEEM ONLINE AT: fspromos4u.com/GeneralMills

Quick Access Code: F24H1CSR



generalmillscf@reply4info.com
1-888-882-9860

K12

Save up to \$1,000

\$2 off per case on 2oz. Equivalent Grain Cup Cereal

500 cases/\$1,000 maximum after rebate

August 1, 2023 - November 30, 2023



Eligible Products

000-16000-28932-1	Cinnamon Toast Crunch™ Cereal 2 oz
100-16000-14886-1	Cinnamon Toast Crunch™ Cereal 25% Less Sugar 2 oz
100-16000-14883-0	Cinnamon Chex™ Cereal 2 oz
100-16000-14885-4	Cocoa Puffs™ Cereal 25% Less Sugar 2 oz
100-16000-14882-3	Honey Nut Cheerios™ Cereal 2 oz
100-16000-14884-7	Lucky Charms™ Cereal 2 oz
100-16000-17262-0	Blueberry Chex™ Cereal 2 oz
100-16000-18448-7	Honey Cheerios™ Cereal 2 oz
100-16000-19567-0	Trix™ Cereal 25% Less Sugar 2 oz

Save \$2 Off

per case on 2oz. Equivalent Grain Cup Cereal

VALID PURCHASE DATES: August 1, 2023 - November 30, 2023

Buy and start saving: Save up to \$1,000 on purchase of up to 500 cases of 2oz Equivalent Grain cup cereal.

OPERATOR INFORMATION

All fields required

Check Here: Yes, I am a K-12 Foodservice Operator

School District Name

Contact Name

Contact Title

Mailing Address

P.O. BOX (no P.O. Box unless a physical address is provided above)

City State Zip

Phone

Email Address
To receive additional offers and communications from General Mills Foodservice.

Co-op/Buying Group/GPO

Distributor House

Distributor City Distributor State

DSR Name

DSR Email
To receive additional offers and communications from General Mills Foodservice.

CALCULATE YOUR REBATE

Product Type	# of cases	\$ per case	Total
2 oz. Equivalent Grain Cup Cereal	x \$ 2.00	= \$ 0.00

Total Cases = 0 **Total Rebate = \$ 0.00**
(500 case maximum) (\$1,000 maximum)

TO RECEIVE YOUR REBATE

Purchase qualifying products between August 1, 2023 - November 30, 2023.

Rebate form must be postmarked or submitted online on or before December 30, 2023.

Offer Valid for K-12 Foodservice Operators and USDA Child Nutrition Programs only.

Open to Group Purchasing Organization Operators. Offer not available to operators buying products with Food Management Company contract pricing.

Limit one K-12 Buy More Get More rebate submission per district during this period. School Districts: Collect for all schools in your district and send in only one submission.

Fill out this form completely and mail or submit Online. Allow 4-6 weeks for processing from the time the rebate is received.

No P.O. Boxes unless accompanied by a physical street address.

Attach distributor invoices or recaps with purchases of qualifying products circled or highlighted. Identifying General Mills code or brand name must be included on invoice.

Distributor recaps must include distributor logo, valid purchase dates and operator name. Operator or Establishment name on this form must match name on submitted invoice(s).

This offer cannot be combined with any other offer. Handwritten invoices will not be accepted. No bulk or third party submission will be accepted.

This certificate cannot be assigned or transferred. Offer good only in the U.S.A. and is void where taxed, restricted or prohibited by law.

General Mills Foodservice reserves the right to audit request for payment, discontinue or revise this offer at any time.

MAIL COMPLETED FORM WITH PROOFS OF PURCHASE TO:

General Mills Foodservice
F24H1K12CUP
PO Box 1003, Dexter, MN 55926

**Must be postmarked on or before:
December 30, 2023**

REDEEM ONLINE AT: fspromos4u.com/GeneralMills

Quick Access Code: F24H1K12CUP



generalmillscf@reply4info.com
1-888-882-9860



Save up to \$300*

\$10 off per case on eligible Pillsbury™ Frozen Baked Goods

*30 case/\$300 maximum after rebate

September 1, 2023 - November 30, 2023

Eligible Product Categories

NEW Baked Sheet Brownies	NEW Freezer to Oven Croissants
Thaw and Serve Brownies	Croissants
Cinnamon Rolls	Place & Bake™ Scones
Twirls	Muffin Batters (18 lb pail, 3 lb tubeset, and BatterPro™)
Twists	Puff Pastry & Pie Dough

Save \$10 off

per case on Pillsbury™ Frozen Baked Goods
(after rebate)

VALID PURCHASE DATES: September 1, 2023 - November 30, 2023

Buy and start saving: get \$10 per case on eligible Pillsbury™ Frozen Baked Goods. 30 case/\$300 maximum

OPERATOR INFORMATION

All fields required for redemption.

(Check ONE) I am a Foodservice Operator in the following segment:

- Restaurant C-Store College & University Lodging
 B&I Healthcare Independent Bakery Other

Establishment

Contact Name

Contact Title

Mailing Address

City State Zip

Phone

Email Address*

Distributor House

Distributor City Distributor State

DSR Name

DSR Email*

*Provide email to receive additional offers and communications from General Mills Foodservice.

CALCULATE YOUR REBATE

Product Type	# of cases	\$ per case	Total
--------------	------------	-------------	-------

Pillsbury™ Frozen Baked Goods	x \$ 10.00	= \$ 0.00
-------------------------------	-------	------------	-----------

Total Cases =	0	Total Rebate = \$ 0.00
	(30 case maximum)	(\$300 maximum)

For faster processing, and tracking of rebate, submit online.
Follow QR code to access, or visit fspromos4u.com/GeneralMills.



TO RECEIVE YOUR REBATE

Purchase qualifying products between September 1, 2023 - November 30, 2023.

Rebate form must be postmarked or submitted online on or before December 30, 2023.

Offer not available to K12 Operators or Supermarkets.

Offer valid for Foodservice Operators only. Open to GPOs and Independent Operators. Offer not available to operators buying products under bid or with Food Management Company contract pricing.

Limit one Pillsbury™ Frozen Baked Goods rebate submission per operation during this period.

Submit online for faster processing or fill out this form completely and mail it in. Allow 4 - 6 weeks for processing from the time the rebate is received.

Attach distributor invoices or recaps with purchases of qualifying products circled or highlighted. Identifying General Mills code or brand name must be included on the invoice.

If you purchase from multiple distributors, please attach all distributor invoices/recaps to one rebate form (do not submit one rebate form for each distributor invoice).

Distributor recaps must include distributor name and/or logo, valid purchase dates and establishment name. Establishment name on this form must match name on submitted invoice(s).

This offer cannot be combined with any other offer.

Handwritten invoices will not be accepted.

No bulk or third party submissions will be accepted.

This certificate cannot be assigned or transferred. Offer good only in the USA and is void where taxed, restricted or prohibited by law.

General Mills Foodservice reserves the right to audit request for payment, discontinue or revise this offer at anytime.

MAIL COMPLETED FORM WITH PROOFS OF PURCHASE TO:

General Mills Foodservice
F24Q2FBG
PO Box 1003,
Dexter, MN 55926

**Must be postmarked on or
before:
December 30, 2023**

REDEEM ONLINE AT: fspromos4u.com/GeneralMills

Quick Access Code: F24Q2FBG



generalmillscf@reply4info.com
1-888-882-9860



Save up to \$1,200

up to \$12 per case on Pillsbury™ Biscuits

100 case/\$1,200 maximum after rebate

September 1, 2023 - November 30, 2023

Eligible Products		Eligible Products	
Code	Product Information	Code	Product Information
Pillsbury™ Frozen Biscuit Dough (Save \$12 per case)		Pillsbury™ Frozen Baked Biscuits (Save \$2 per case)	
100-94562-06331-0	Garlic & Cheddar (210 ct) 1.2 oz, 2.25"	100-94562-06232-0	Mini Buttermilk (175 ct) 1.2 oz, 2.25"
100-94562-06332-7	Butter Tastin™ (216 ct) 2.2 oz, 2.75"	100-94562-06283-2	Buttermilk (120 ct) 2.0 oz, 2.875"
100-94562-06240-5	Buttermilk (120 ct) 2.2 oz, 2.75"	100-94562-06234-4	Mini Golden Buttermilk (175 ct) 1.0 oz, 2.25"
100-94562-06241-2	Buttermilk (120 ct) 2.6 oz, 3.25"	100-94562-06235-1	Golden Buttermilk (120 ct) 2.25 oz, 2.875"
100-94562-06263-4	Mini Southern Style (210 ct) 1.2 oz, 2.25"	100-94562-06236-8	Golden Buttermilk Easy Split™ (120 ct) 2.25 oz, 2.875"
100-94562-06252-8	Southern Style (216 ct) 2.2 oz, 2.75"	100-94562-32391-9	Golden Buttermilk Easy Split™ Reduced Sodium (120 ct) 2.25 oz, 2.875"
100-94562-06250-4	Southern Style (120 ct) 2.2 oz, 2.75"	100-94562-06237-5	Golden Buttermilk Easy Split™ (75 ct) 2.85 oz, 3.25"
100-94562-31151-0	Southern Style Reduced Sodium (216 ct) 2.2 oz, 2.75"	100-94562-06233-7	Mini Southern Style (175 ct) 1.2 oz, 2.25"
100-94562-06254-2	Large Southern Style (120 ct) 4.5 oz, 3.25"	100-94562-06285-6	Southern Style (120 ct) 2.0 oz, 2.875"
100-94562-06346-4	Southern Style Easy Split™ (216 ct) 2.2 oz, 2.75"	100-94562-32499-2	Southern Style Easy Split™ (60 ct) 3.4 oz, 3.75"
100-94562-31524-2	Southern Style Easy Split™, Reduced Sodium (216 ct) 2.2 oz, 2.75"	100-94562-32272-1	Mini Whole Grain-Rich (175 ct) 1.0 oz, 2.25"
100-94562-10752-6	Southern Style Easy Split™ (216 ct) 2.51 oz, 2.75"	100-94562-32271-4	Whole Grain-Rich Easy Split™ (120 ct) 2.0 oz, 2.875"
100-94562-06249-8	Southern Style Easy Split™ (168 ct) 3.17 oz, 3.25"		
100-94562-10833-2	Large Southern Style Easy Split™ (120 ct) 4.5 oz, 3.25"		
100-94562-32269-1	Mini Whole Grain (210 ct) 1.25 oz, 2.25"		
100-94562-32268-4	Whole Grain Easy Split™ (216 ct) 2.51 oz, 2.75"		
100-94562-32267-7	Whole Grain (216 ct) 2.51 oz, 2.75"		
107-21582-12272-6	Garlic Cheddar Easy Split™ (90 ct) 3.17 oz		
100-18000-12923-9	Pillsbury™ Combread Biscuit Dough (120 ct) 2.2 oz		

Save up to \$12 per case on Pillsbury™ Biscuits (after rebate)

VALID PURCHASE DATES: September 1, 2023 - November 30, 2023

Buy and start saving: Save up to \$1,200, \$12 per case, on Pillsbury™ Biscuits. 100 case / \$1,200 maximum

OPERATOR INFORMATION

All fields required for redemption.

(Check ONE) I am a Foodservice Operator in the following segment:

- Restaurant C-Store College & University Lodging
 B&I Healthcare Independent Bakery Other

Establishment

Contact Name

Contact Title

Mailing Address

City State Zip

Phone

Email Address*

Distributor House

Distributor City Distributor State

DSR Name

DSR Email*

*Provide email to receive additional offers and communications from General Mills Foodservice.

CALCULATE YOUR REBATE

Product Type	# of cases	\$ per case	Total
Pillsbury™ Baked Biscuits	x \$ 2.00 =	\$ 0.00
Pillsbury™ Frozen Biscuit Dough	x \$ 12.00 =	\$ 0.00

Total Cases = **0** **Total Rebate = \$ 0.00**
(100 case maximum) (\$1,200 maximum)

For faster processing, and tracking of rebate, submit online.
Follow QR code to access, or visit fspromos4u.com/GeneralMills.



TO RECEIVE YOUR REBATE

Purchase qualifying products between September 1, 2023 - November 30, 2023.

Rebate must be postmarked or submitted online before December 30, 2023.

Offer not available to K12 Operators or Supermarkets.

Offer valid for Foodservice Operators only. Open to GPOs and Independent Operators. Offer not available to operators buying products under bid or with Food Management Company contract pricing.

Limit one Pillsbury™ National Biscuit rebate submission per operation during this period.

Submit online for faster processing or fill out this form completely and mail it in. Allow 4 - 6 weeks for processing from the time the rebate is received.

Attach distributor invoices or recaps with purchases of qualifying products circled or highlighted. Identifying General Mills code or brand name must be included on the invoice.

If you purchase from multiple distributors, please attach all distributor invoices/recaps to one rebate form (do not submit one rebate form for each distributor invoice).

Distributor recaps must include distributor name and/or logo, valid purchase dates and establishment name. Establishment name on this form must match name on submitted invoice(s).

This offer cannot be combined with any other offer.

Handwritten invoices will not be accepted.

No bulk or third party submissions will be accepted.

This certificate cannot be assigned or transferred. Offer good only in the USA and is void where taxed, restricted or prohibited by law.

General Mills Foodservice reserves the right to audit request for payment, discontinue or revise this offer at anytime.

MAIL COMPLETED FORM WITH PROOFS OF PURCHASE TO:

General Mills Foodservice
F24Q2NTL
PO Box 1003, Dexter, MN 55926

**Must be postmarked on or before:
December 30, 2023**

REDEEM ONLINE AT: fspromos4u.com/GeneralMills

Quick Access Code: F24Q2NTL



generalmillsf@reply4info.com
1-888-882-9860



Variety Pack Cereal Rebate

Save up to \$1,000*
\$10 off per case

on General Mills single serve variety pack cereal

*100 cases/\$1,000 maximum after rebate

Offer valid only for operators in the following segments:
College & University, Healthcare, Retirement Living,
Business & Industry, Lodging, and Military Operations

September 1, 2023 - November 30, 2023

Eligible Products

Code	Product Information
100-16000-31079-4	General Mills Cereal Adult Variety Pack Single Serve Cup 1.67 oz
100-16000-14151-0	General Mills Cereal Family Variety Pack Single Serve Cup 1.8 oz
100-16000-31154-8	General Mills Cereal Goodness Variety Pack Single Serve Cup 2.02 oz

Save \$10 per case on Variety Pack Single Serve Cup and Bowlpack cereal (after rebate)

VALID PURCHASE DATES: September 1, 2023 - November 30, 2023

Buy and start saving: Save up to \$1,000 on Variety Pack Single Serve Cup cases. 100 case / \$1,000 maximum

OPERATOR INFORMATION

All fields required for redemption.

(Check ONE) I am a Foodservice Operator in the following segment:

B&I Lodging Healthcare Retirement Living C&U Military

Establishment

Contact Name

Contact Title

Mailing Address

City State Zip

Phone

Email Address*

Distributor House

Distributor City Distributor State

DSR Name

DSR Email*

*Provide email to receive additional offers and communications from General Mills Foodservice.

CALCULATE YOUR REBATE

Product Type	# of cases	\$ per case	Total
--------------	------------	-------------	-------

Variety Pack Single Serve Cup	x \$ 10.00	= \$ 0.00
-------------------------------	-------	------------	-----------

Total Cases =	0	Total Rebate = \$ 0.00
	<i>(100 cases maximum)</i>	<i>(\$1,000 maximum)</i>

TO RECEIVE YOUR REBATE

Purchase qualifying products between September 1, 2023 - November 30, 2023.

Rebate must be postmarked or submitted online before December 30, 2023.

Offer valid only for C&U, Healthcare, Retirement Living, B&I, Lodging, and Military Operations.

Open to GPOs and Independent Operators. Offer not available to operators buying products under bid or with Food Management Company contract pricing.

Limit one Variety Pack Cereal Rebate submission per operation during this period.

Submit online for faster processing or fill out this form completely and mail it in. Allow 4 - 6 weeks for processing from the time the rebate is received.

Attach distributor invoices or recaps with purchases of qualifying products circled or highlighted. Identifying General Mills code or brand name must be included on the invoice.

If you purchase from multiple distributors, please attach all distributor invoices/recaps to one rebate form (do not submit one rebate form for each distributor invoice).

Distributor recaps must include distributor name and/or logo, valid purchase dates and establishment name. Establishment name on this form must match name on submitted invoice(s).

This offer cannot be combined with any other offer.

Handwritten invoices will not be accepted.

No bulk or third party submissions will be accepted.

This certificate cannot be assigned or transferred. Offer good only in the USA and is void where taxed, restricted or prohibited by law.

General Mills Foodservice reserves the right to audit request for payment, discontinue or revise this offer at anytime.

MAIL COMPLETED FORM WITH PROOFS OF PURCHASE TO:

General Mills Foodservice
F24Q2VPC
PO Box 1003, Dexter, MN 55926

Must be postmarked on or
before:
December 30, 2023

REDEEM ONLINE AT: fspromos4u.com/GeneralMills

Quick Access Code: F24Q2VPC



generalmillscf@reply4info.com
1-888-882-9860



Yoplait® ParfaitPro® Rebate

Save up to \$600*

\$15 off per case on Bulk Yogurt Traditional and Dairy Free

*40 cases/\$600 maximum after rebate

Offer valid only for operators in the following segments: College & University, Healthcare, Retirement Living, Business & Industry and Lodging Operations

September 1, 2023 - November 30, 2023

Eligible Products	
Code	Product Information
Yoplait® ParfaitPro® Yogurt	
100-70470-41167-2	Yoplait® ParfaitPro® Greek, Vanilla
100-70470-16632-9	Yoplait® ParfaitPro® Yogurt, Lowfat, Vanilla
100-70470-16067-9	Yoplait® ParfaitPro® Yogurt, Blueberry
100-70470-16631-2	Yoplait® ParfaitPro® Yogurt, Lowfat, Strawberry
100-70470-16123-2	Yoplait® ParfaitPro® Max Strawberry
100-70470-32072-1	Yoplait® ParfaitPro® Max Strawberry
Yoplait® ParfaitPro® Plant Based Yogurt	
100-70470-16659-6	Yoplait® ParfaitPro® Dairy Free Vanilla Coconut Based Yogurt Alternative 4/48 OZ

Save \$15 per case on Yoplait® ParfaitPro® bulk yogurt (after rebate)

VALID PURCHASE DATES: September 1, 2023 - November 30, 2023

Buy and start saving: Save up to \$600 on purchase of dairy based and plant based Yoplait® ParfaitPro® bulk yogurt. 40 case/\$600 max

OPERATOR INFORMATION

All fields required for redemption.

(Check ONE) I am a Foodservice Operator in the following segment:

- College & University Lodging B&I
 Healthcare Retirement Living

Establishment

Contact Name

Contact Title

Mailing Address

City State Zip

Phone

Email Address*

Distributor House

Distributor City Distributor State

DSR Name

DSR Email*

*Provide email to receive additional offers and communications from General Mills Foodservice.

CALCULATE YOUR REBATE

Product Type	# of cases	\$ per case	Total
Yoplait® ParfaitPro®	x \$ 15.00	= \$ 0.00

Total Cases =	0	Total Rebate = \$ 0.00
	40 cases maximum	(\$600 maximum)

Dairy Based Yogurt portion not available in the following states due to dairy laws: CA, LA, MN, ND, NJ, NV, TN, and WI.

TO RECEIVE YOUR REBATE

Purchase qualifying products between September 1, 2023 - November 30, 2023.

Rebate must be postmarked or submitted online before December 30, 2023.

Offer valid only for C&U, Healthcare, Retirement Living, B&I and Lodging Operations.

Open to GPOs and Independent Operators. Offer not available to operators buying products under bid or with Food Management Company contract pricing.

Limit one Yoplait® ParfaitPro® Bulk Yogurt rebate submission per operation during this period.

Submit online for faster processing or fill out this form completely and mail it in. Allow 4 - 6 weeks for processing from the time the rebate is received.

Attach distributor invoices or recaps with purchases of qualifying products circled or highlighted. Identifying General Mills code or brand name must be included on the invoice.

If you purchase from multiple distributors, please attach all distributor invoices/recaps to one rebate form (do not submit one rebate form for each distributor invoice).

Distributor recaps must include distributor name and/or logo, valid purchase dates and establishment name. Establishment name on this form must match name on submitted invoice(s).

This offer cannot be combined with any other offer.

Handwritten invoices will not be accepted.

No bulk or third party submissions will be accepted.

This certificate cannot be assigned or transferred. Offer good only in the USA and is void where taxed, restricted or prohibited by law.

General Mills Foodservice reserves the right to audit request for payment, discontinue or revise this offer at anytime.

MAIL COMPLETED FORM WITH PROOFS OF PURCHASE TO:

General Mills Foodservice
F24Q2PAR
PO Box 1003, Dexter, MN 55926

Must be postmarked on or before:
December 30, 2023

REDEEM ONLINE AT: fspromos4u.com/GeneralMills

Quick Access Code: F24Q2PAR



generalmillsf@reply4info.com
1-888-882-9860



Single Serve Yogurt Rebate

Save up to \$100*

on select yogurt products

*50 cases/\$100 maximum after rebate

Offer valid only for operators in the following segments: College & University, Healthcare, Retirement Living, Business & Industry, and Lodging Operations

September 1, 2023 - November 30, 2023

Eligible Products

Code	Product Information	Code	Product Information
10070470457267	Yoplait® Yogurt, Lactose Free, French Vanilla, 6 oz	10070470496549	Oui™ by Yoplait® French Style Yogurt, Black Cherry
10070470457250	Yoplait® Yogurt, Lactose Free, Strawberry, 6 oz	10070470496532	Oui™ by Yoplait® French Style Yogurt, Blueberry
10070470188222	Yoplait® Light Yogurt, 6 oz, Blueberry/Peach/Strawberry 24ct	10070470496525	Oui™ by Yoplait® French Style Yogurt, Coconut
00070470483627	Yoplait® Light Yogurt 4 oz Blueberry/Vanilla	10070470103768	Oui™ by Yoplait® French Style Yogurt, Key Lime
10070470006526	Yoplait® Light Yogurt 6 oz Blueberry Patch	10070470496518	Oui™ by Yoplait® French Style Yogurt, Lemon
10070470006557	Yoplait® Light Yogurt 6 oz Peach	10070470496495	Oui™ by Yoplait® French Style Yogurt, Peach
10070470006656	Yoplait® Light Yogurt 6 oz Key Lime Pie	10070470496471	Oui™ by Yoplait® French Style Yogurt, Strawberry
10070470006519	Yoplait® Light Yogurt 6 oz Red Raspberry	10070470496464	Oui™ by Yoplait® French Style Yogurt, Vanilla
10070470006540	Yoplait® Light Yogurt 6 oz Strawberry Banana	00070470177281	Yoplait® Original Yogurt 4 oz Variety Pack (Raspberry/Peach)
10070470006502	Yoplait® Light Yogurt 6 oz Strawberry	10070470001286	Yoplait® Whips! Yogurt 4 oz Key Lime Pie
10070470197354	Yoplait® Light Nonfat Yogurt 4 oz Variety Pack (Strawberry/Straw Banana)	10070470001293	Yoplait® Whips! Yogurt 4 oz Orange Creme
10070470006533	Yoplait® Light Yogurt 6 oz Cherry	10070470001279	Yoplait® Whips! Yogurt 4 oz Raspberry
10070470006434	Yoplait® Light Yogurt 6 oz Very Vanilla	10070470001095	Yoplait® Whips! Yogurt 4 oz Strawberry Mist
10070470188178	Yoplait® Original Yogurt, Blueberry/Peach/Strawberry, 24 ct	10070470284474	Yoplait® Whips! Yogurt 4 oz Chocolate Mousse
10070470144143	Yoplait® Original Low Fat Yogurt, Mixed Berry/Blueberry/Strawberry	10070470278312	Yoplait® Whips! Yogurt 4 oz Vanilla Creme
10070470003037	Yoplait® Original Yogurt 6 oz Cherry Orchard	10070470435791	Yoplait® Greek 100 Protein Yogurt, Black Cherry
10070470003235	Yoplait® Original Yogurt 6 oz French Vanilla	10070470455782	Yoplait® Greek 100 Protein Yogurt, Blueberry
10070470003075	Yoplait® Original Yogurt 6 oz Harvest Peach	10070470433315	Yoplait® Greek 100 Protein Yogurt, Mixed Berry
10070470003068	Yoplait® Original Yogurt 6 oz Lemon Burst	10070470433339	Yoplait® Greek 100 Protein Yogurt, Peach
10070470003105	Yoplait® Original Yogurt 6 oz Mixed Berry	10070470433322	Yoplait® Greek 100 Protein Yogurt, Strawberry
10070470003020	Yoplait® Original Yogurt 6 oz Mountain Blueberry	10070470486052	Yoplait® Greek 100 Protein Yogurt, Strawberry Banana
10070470003013	Yoplait® Original Yogurt 6 oz Red Raspberry	10070470433292	Yoplait® Greek 100 Protein Yogurt, Vanilla
10070470003006	Yoplait® Original Yogurt 6 oz Strawberry	10070470446148	Yoplait® Whips!, Greek 100 Yogurt, 4 oz, Strawberry Cheesecake
10070470003136	Yoplait® Original Yogurt 6 oz Strawberry Banana	10070470446162	Yoplait® Whips!, Greek 100 Yogurt, 4 oz, Vanilla Cupcake
00070470177298	Yoplait® Original Yogurt 4 oz Variety Pk (Strawberry/Strawberry-Banana)	10070470491599	Yoplait® Greek Protein Yogurt, Blueberry, 3.5 oz
10070470159673	Oui™ by Yoplait® Coconut Dairy Alternative, Mango	10070470459162	Yoplait® Greek Blended Yogurt, Blueberry, 5.3oz
10070470159666	Oui™ by Yoplait® Coconut Dairy Alternative, Raspberry	10070470491582	Yoplait® Greek Protein Yogurt, Strawberry, 3.5 oz
10070470158324	Oui™ by Yoplait® Coconut Dairy Alternative, Strawberry	10070470459155	Yoplait® Greek Blended Yogurt, Strawberry Raspberry 5.3oz
10070470159659	Oui™ by Yoplait® Coconut Dairy Alternative, Vanilla	10070470459131	Yoplait® Greek Blended Yogurt, Vanilla, 5.3oz

This rebate offer not valid in the following states due to dairy laws: CA, LA, MN, ND, NJ, NV, TN, and WI.

Save \$2 per case on select single serve Yoplait® products (after rebate)

VALID PURCHASE DATES: September 1, 2023 - November 30, 2023

Buy and start saving: Save up to \$100, \$2 per case, on single serve adult and greek yogurt. 50 case / \$100 maximum

OPERATOR INFORMATION

All fields required for redemption.

(Check ONE) I am a Foodservice Operator in the following segment:

- College & University Lodging B&I
 Healthcare Retirement Living

Establishment

Contact Name

Contact Title

Mailing Address

City State Zip

Phone

Email Address*

Distributor House

Distributor City Distributor State

DSR Name

DSR Email*

**Provide email to receive additional offers and communications from General Mills Foodservice.*

CALCULATE YOUR REBATE

Product Type	# of cases	\$ per case	Total
--------------	------------	-------------	-------

Single Serve Yogurt	x \$ 2.00	= \$ 0.00
---------------------	-------	-----------	-----------

Total Cases =	0	Total Rebate = \$ 0.00
	<i>(50 cases maximum)</i>	<i>(\$100 maximum)</i>

Rebate not valid in the following states due to dairy laws: CA, LA, MN, ND, NJ, NV, TN, and WI.

TO RECEIVE YOUR REBATE

Purchase qualifying products between September 1, 2023 - November 30, 2023.

Rebate must be postmarked or submitted online before December 30, 2023.

Offer valid only for C&U, Healthcare, Retirement Living, B&I and Lodging Operations.

Open to GPOs and Independent Operators. Offer not available to operators buying products under bid or with Food Management Company contract pricing.

Limit one Single Serve Yogurt rebate submission per operation during this period.

Submit online for faster processing or fill out this form completely and mail it in. Allow 4 - 6 weeks for processing from the time the rebate is received.

Attach distributor invoices or recaps with purchases of qualifying products circled or highlighted. Identifying General Mills code or brand name must be included on the invoice.

Rebate offer not available in the following states due to dairy laws: CA, LA, MN, ND, NJ, NV, TN, and WI.

If you purchase from multiple distributors, please attach all distributor invoices/recaps to one rebate form (do not submit one rebate form for each distributor invoice).

Distributor recaps must include distributor name and/or logo, valid purchase dates and establishment name. Establishment name on this form must match name on submitted invoice(s).

This offer cannot be combined with any other offer.

Handwritten invoices will not be accepted.

No bulk or third party submissions will be accepted.

This certificate cannot be assigned or transferred. Offer good only in the USA and is void where taxed, restricted or prohibited by law.

General Mills Foodservice reserves the right to audit request for payment, discontinue or revise this offer at anytime.

MAIL COMPLETED FORM WITH PROOFS OF PURCHASE TO:

General Mills Foodservice
F24Q12OP
PO Box 1003, Dexter, MN 55926

Must be postmarked on or before:
December 30, 2023

REDEEM ONLINE AT: fspromos4u.com/GeneralMills

Quick Access Code: F24Q2YOP



generalmillsf@reply4info.com
1-888-882-9860

SAVE UP TO \$1,000 ON HERSHEY PRODUCTS PER YEAR

*\$250 PER QUARTER



Eligible purchases of Hershey products and proof of performance must be submitted quarterly per the schedule as outlined below by postmarked due date. Please check the appropriate quarter:

- Q1: January 1–March 31, Postmarked by April 30
- Q2: April 1–June 3, Postmarked by July 31
- Q3: July 1–September 31, Postmarked by October 31
- Q4: October 1–December 31, Postmarked by January 31, 2024

Attach copies of distributor invoices to the completed rebate form, clearly identifying the eligible Hershey Foodservice products.

All distributor invoices must include the distributor's name and establishment name. Distributor reports will be accepted if they show customer information (name, address, purchase dates, manufacturer products, SKUs or brand names).

Complete this form to receive your check!

SUBMIT PROOF OF PURCHASE ONLINE:

OR

SEND REBATE FORM TO:

www.fspromos4u.com/Hershey
Enter code: H46JAYGYJ
Create an account, and enter order information to submit your rebate.

Hershey Foodservice
Attn: 2023 Hershey Rebate
P.O. Box 2050-HE
Brownsdale, MN 55918

1-877-772-3556

www.hersheyfoodservice.com

MAKE CHECK PAYABLE TO:

Establishment _____

Full Name _____

Title _____

Mailing Address _____

City/State/ZIP _____

Business Phone _____

Email _____

Check here if you would like to receive exclusive email offers from Hershey Foodservice.

Primary Distributor _____

City/State/ZIP _____

CHECK APPROPRIATE SEGMENT:

- QSR
- Family/Casual Dining
- College & University
- C-store on Campus (C&U, B&I, Healthcare)
- Hotel/Lodging
- Ice Cream/Yogurt Shop
- Business Dining
- Hospital
- Other: Please Specify _____

Terms and Conditions: This offer is limited to foodservice operators purchasing through foodservice distributors. This offer is limited to one rebate submission per quarter. Rebate requests must be submitted individually by foodservice operators. No bulk submissions or third-party submissions will be accepted. Purchases must be made in full-case quantities to qualify. This offer cannot be combined with other rebates, allowances, bid programs or national account contracts. The maximum rebate is \$250 per operator per quarter; all rules apply. Multi-unit operators may submit rebate requests for all stores if units are listed with products and purchase amounts. Rebate forms with proof of purchase must be postmarked or uploaded on or before: April 30, 2023 for Q1, July 31, 2023 for Q2, October 31, 2023 for Q3, and January 31, 2024 for Q4. Hershey Foodservice reserves the right to audit requests for payment. Allow four weeks to receive your check(s). This offer is void where prohibited, taxed or otherwise regulated.



ITEM #	PRODUCT DESCRIPTION	Case Pack	# Cases Purchased x Rebate Per Case = \$
SYRUP			
34000-30575	HERSHEY'S SPECIAL DARK Chocolate Syrup Jug	4/8 lbs. jugs	___ x \$1.00/case = \$ ___
34000-30570	HERSHEY'S Chocolate Syrup Jug	6/7.5 lbs. jugs	___ x \$1.00/case = \$ ___
34000-31840	HERSHEY'S Caramel Syrup Bottle	12/22 oz. bottles	___ x \$.50/case = \$ ___
34000-35113	HERSHEY'S Caramel Sundae Dream Syrup Bottle	6/15 oz. bottles	___ x \$.50/case = \$ ___
34000-31273	HERSHEY'S Simply Chocolate Syrup Bottle	12/21.8 oz. bottles	___ x \$.50/case = \$ ___
34000-31240	HERSHEY'S Chocolate Syrup Bottle	24/24 oz. bottles	___ x \$1.00/case = \$ ___
34000-31525	HERSHEY'S Sugar Free Syrup Bottle	6/17.5 oz. bottles	___ x \$.50/case = \$ ___
34000-31267	HERSHEY'S Chocolate Syrup Pouch	4/64 oz. pouches	___ x \$.50/case = \$ ___
34000-30571	HERSHEY'S Simply Chocolate Syrup Jug	6/7.5 lbs. jugs	___ x \$1.00/case = \$ ___
34000-31800	HERSHEY'S Strawberry Syrup Bottle	12/22 oz. bottles	___ x \$.50/case = \$ ___
PEANUT BUTTER			
34000-35031	REESE'S Peanut Butter Sauce	6/4.5 lbs. jars	___ x \$2.00/case = \$ ___
34000-35024	REESE'S Simply Peanut Butter	6/4.5 lbs. jars	___ x \$2.00/case = \$ ___
BAKING CHIPS			
34000-14134	HERSHEY'S Sugar Free Semi-Sweet Baking Chips	12/8 oz.	___ x \$.50/case = \$ ___
34000-06152	HEATH Milk Chocolate English Toffee Baking Bits	12/8 oz.	___ x \$.50/case = \$ ___
34000-14400	REESE'S Peanut Butter Baking Chips	12/10 oz.	___ x \$.50/case = \$ ___
34000-14670	HERSHEY'S Cinnamon Baking Chips	12/10 oz.	___ x \$.50/case = \$ ___
34000-06180	HEATH Bits 'O Brickle English Toffee Bits	12/8 oz.	___ x \$.50/case = \$ ___
34000-14570	HERSHEY'S Butterscotch Baking Chips	12/11 oz.	___ x \$.50/case = \$ ___
34000-14110	HERSHEY'S Vanilla Flavored Pieces	12/12 oz.	___ x \$.50/case = \$ ___
34000-14600	HERSHEY'S Milk Chocolate Baking Chips	12/11.5 oz.	___ x \$.50/case = \$ ___
34000-14530	HERSHEY'S Mini Semi-Sweet Chocolate Chips	12/12 oz.	___ x \$.50/case = \$ ___
34000-14830	HERSHEY'S Semi-Sweet Chocolate Baking Chips	12/12 oz.	___ x \$.50/case = \$ ___
34000-61725	REESE'S Peanut Butter Mini Baking Chips, 4,000 ct.	1/25 lbs. box	___ x \$1.50/case = \$ ___
34000-61425	HERSHEY'S Milk Chocolate Chips, 1,000 ct.	1/25 lbs. box	___ x \$1.50/case = \$ ___
34000-14122	HERSHEY'S SPECIAL DARK Chocolate Chips	1/25 lbs. box	___ x \$1.50/case = \$ ___
34000-14625	HERSHEY'S MINI KISSES, Milk Chocolate, Unwrapped	1/25 lbs. box	___ x \$1.50/case = \$ ___
34000-61625	REESE'S Peanut Butter Flavored Chips, 1,000 ct.	1/25 lbs. box	___ x \$1.50/case = \$ ___
34000-42663	HERSHEY'S Premier White Vanilla Flavored Pieces	1/25 lbs. box	___ x \$1.50/case = \$ ___
34000-61225	HERSHEY'S Semi-Sweet Mini Chocolate Chips, 4,000 ct.	1/25 lbs. box	___ x \$1.50/case = \$ ___
34000-61125	HERSHEY'S Semi-Sweet Chocolate Chips, 1,000 ct.	1/25 lbs. box	___ x \$1.50/case = \$ ___
34000-22913	REESE'S Peanut Butter Chips	5 lbs. bag	___ x \$2.00/case = \$ ___
34000-14839	HERSHEY'S Premier White Crème Chips	5 lbs. bag	___ x \$2.00/case = \$ ___
34000-14838	HERSHEY'S Semi-Sweet Chocolate Chips	5 lbs. bag	___ x \$2.00/case = \$ ___
34000-14531	HERSHEY'S Mini-Semi-Sweet Chocolate Chips	5 lbs. bag	___ x \$2.00/case = \$ ___
COCOA			
34000-63025	HERSHEY'S Cocoa, Dutch	1/25 lbs. box	___ x \$2.00/case = \$ ___
34000-63525	HERSHEY'S Cocoa, Natural	1/25 lbs. box	___ x \$2.00/case = \$ ___
34000-63505	HERSHEY'S Cocoa, Natural	6/5 lbs. bags	___ x \$2.00/case = \$ ___
34000-63150	HERSHEY'S Cocoa, Dutch	1/50 lbs. box	___ x \$2.50/case = \$ ___
34000-63550	HERSHEY'S Cocoa, Natural	1/50 lbs. box	___ x \$2.50/case = \$ ___
34000-05100	HERSHEY'S Unsweetened Cocoa	12/16 oz. cans	___ x \$1.00/case = \$ ___

ITEM # PRODUCT DESCRIPTION Case Pack # Cases Purchased x Rebate Per Case = \$

FOODSERVICE CONFECTION INGREDIENTS

34000-40001	REESE'S Peanut Butter Cups, Unwrapped	1/20 lbs. box	___ x \$2.00/case =	\$ ___
10700-60546	HEATH English Toffee Bits, Coarse Grind	1/50 lbs. box	___ x \$2.00/case =	\$ ___
10700-60805	HEATH English Toffee Bits with Chocolate, Medium Grind	4/3 lbs. bags	___ x \$1.00/case =	\$ ___
10700-60545	HEATH English Toffee Bits, Large Grind	1/45 lbs. box	___ x \$2.00/case =	\$ ___
10700-60570	HEATH English Toffee Bits with Chocolate, Medium Grind	1/50 lbs. box	___ x \$2.00/case =	\$ ___
10700-65505	HEATH Toffee Miniatures, Uncoated	1/40 lbs. box	___ x \$2.00/case =	\$ ___
10700-60575	HEATH English Toffee Bits with Chocolate, Medium Grind	6/5 lbs. bags	___ x \$2.00/case =	\$ ___
10700-60551	HEATH English Toffee Bits, Fine Grind	1/50 lbs. box	___ x \$2.00/case =	\$ ___
10700-60550	HEATH English Toffee Bits, Medium Grind	1/50 lbs. box	___ x \$2.00/case =	\$ ___
10700-60580	HEATH English Toffee Bits with Chocolate, Large Grind	1/50 lbs. box	___ x \$2.00/case =	\$ ___
10700-60722	HEATH English Toffee Bits with Chocolate	1/30 lbs. box	___ x \$2.00/case =	\$ ___
34000-60121	REESE'S PIECES Mini Candies	1/25 lbs. box	___ x \$1.50/case =	\$ ___
34000-11300	REESE'S PIECES Candies	1/25 lbs. box	___ x \$1.50/case =	\$ ___
34000-40005	REESE'S Peanut Butter Cups, Unwrapped	1/30 lbs. box	___ x \$2.00/case =	\$ ___
34000-40024	REESE'S Peanut Butter Cups, Ground	4/5 lbs. box	___ x \$2.00/case =	\$ ___
34000-40003	REESE'S Peanut Butter Cups, Unwrapped	1/20 lbs. box	___ x \$2.00/case =	\$ ___
34000-80130	REESE'S Peanut Butter Cups, Medium Grind	1/25 lbs. box	___ x \$2.00/case =	\$ ___

STANDARD BARS

34000-44000	REESE'S Peanut Butter Cup Standard Bar, 1.5 oz.	12/36 ct.	___ x \$7.00/case =	\$ ___
34000-24600	KIT KAT® Standard Bar, 1.5oz.	12/36 ct.	___ x \$7.00/case =	\$ ___
34000-24000	HERSHEY'S Milk Chocolate Standard Bar, 1.55 oz.	12/36 ct.	___ x \$7.00/case =	\$ ___
34000-23900	HERSHEY'S COOKIES 'N' CREME Standard Bar, 1.55oz.	12/36 ct.	___ x \$7.00/case =	\$ ___
34000-23951	HERSHEY'S Cookies 'n' Creme Standard Bar, 1.55 oz.	2/36 ct.	___ x \$1.00/case =	\$ ___
34000-24046	HERSHEY'S Milk Chocolate Standard Bars, 1.55 oz.	2/36 ct.	___ x \$1.00/case =	\$ ___
34000-24626	KIT KAT® Standard Bars, 1.5 oz.	2/36 ct.	___ x \$1.00/case =	\$ ___
34000-44125	REESE'S Peanut Butter Cups Standard Bars, 1.5 oz.	2/36 ct.	___ x \$1.00/case =	\$ ___
34000-30604	Assorted Standard Bar Variety Pack, 30 count, 45 oz. (7 HERSHEY'S Milk Chocolate Bars, 7 HERSHEY'S Milk Chocolate with Almonds, 6 KIT KAT® Bars, 10 REESE'S Peanut Butter Cups Bars)	6/30 ct.	___ x \$3.00/case =	\$ ___

BULK WRAPPED CANDY

34000-44825	REESE'S Peanut Butter Cup Miniatures	1/25 lbs. box	___ x \$2.00/case =	\$ ___
34000-16000	HERSHEY'S KISSES Milk Chocolates	1/25 lbs. box	___ x \$2.00/case =	\$ ___
34000-21000	HERSHEY'S Miniatures	1/25 lbs. box	___ x \$2.00/case =	\$ ___
10700-33101	JOLLY RANCHER Assortment	1/30 lbs. box	___ x \$1.00/case =	\$ ___
34000-06643	YORK Peppermint Patties Changemaker, 0.48 oz.	9/175 ct. DRC	___ x \$2.00/case =	\$ ___

POUCHES

34000-35193	HERSHEY'S Milk Chocolate Fudge	4/48 oz. pouches	___ x \$.50/case =	\$ ___
34000-35194	HERSHEY'S Classic Caramel	4/48 oz. pouches	___ x \$.50/case =	\$ ___
34000-35192	HERSHEY'S SPECIAL DARK Fudge	4/48 oz. pouches	___ x \$.50/case =	\$ ___

Visit hersheyfoodservice.com



View our **product portfolio**



BRANDED INGREDIENTS AND SNACKS CONSUMERS TRUST!

For more information on our foodservice solutions, innovative recipes and ideas, visit hersheyfoodservice.com Questions? Call or text us at 1-800-468-1714.



28 12 343

11/22

FSPROMOS4U

Thank You FOR YOUR BUSINESS



HONEY BUTTER BISCUIT SHRIMP & FLOUNDER

GET \$10 BACK PER CASE*

* Up to \$500

Thank you for your order of Honey Butter Biscuit Shrimp and Flounder!
Place a new order today and get \$10 back per case, up to \$500!

PROMOTION: JANUARY 1 - DECEMBER 31, 2023

Code	Mrs. Friday's® Honey Butter Biscuit	Case Pack	Rebate Amt. /Case	Cases Purchased	Est. Rebate Amt. Due
057562	Shrimp	4/2.5#	\$10		
075722	Flounder	4/2.5#	\$10		
<i>\$10 off per case, up to \$500 TOTAL DUE \$</i>					

To receive your rebate, please provide the following information. (Please print.)

Name _____

Title _____

Company _____

Address _____

City _____ State _____ Zip _____

Phone _____ Fax _____

Email _____

Include me on email offers from King & Prince Seafood®

Distributor _____ City/State _____

Foodservice Segment (Please check all that apply.)

- Independent Restaurant Regional Chain National Chain QSR
- Fast Casual Casual Dining Family Dining Cafeteria
- Bar/Tavern B&I Healthcare Travel/Entertainment
- College/University School K-12 Hotel/Motel Casino
- Stadium/Arena Club Store Convenience Store Correctional Facility
- Other _____

RULES: To receive your rebate, attach this coupon with copies of your foodservice distributor's invoice as proof of purchase for item #057562 and 075722 purchased between January 1 and December 31, 2023. One rebate per operator. Distributors, re-distributors, contract, bid or special priced customers do not qualify. Customer information must be completed in full. Handwritten invoices will not be accepted. Invoices must include distributor name. No bulk or third party submissions will be accepted. \$10 off per case up to \$500 per location. No cash value. This coupon cannot be used in conjunction with any other King & Prince Seafood® offer or contract priced item. Coupon void where taxed, prohibited or restricted. Good only in the USA. Allow 4 to 6 weeks for refund receipt.



Questions? Email kingandprince@ibidata.com
or call 1.866.986.4920

Mail rebate before January 31, 2024 to:

King & Prince Seafood®, P.O. Box 1002, Dexter, MN 55926

kpseafood.com





Sea. Taste. Enjoy!

INTRODUCING THE NEW COMFORT FOOD FAVORITE

HONEY BUTTER BISCUIT Shrimp & Flounder



BUY ONE GET ONE FREE*

*After rebate

Show your guests some love, hype your menu, and boost your margins with our new Honey Butter Biscuit-coated shrimp and flounder. And as an extra-special welcome, for a limited time, **buy 1 case, get 1 case free**. So go ahead... sit & savor the rich, buttery taste of our new Honey Butter Biscuit Shrimp & Flounder.

PROMOTION:

JANUARY 1 - DECEMBER 31, 2023

Code	Mrs. Friday's® Honey Butter Biscuit	Case Pack	# of Cases Purchased	Case Price
057562	Shrimp	4/2.5#		
075722	Flounder	4/2.5#		
Max. Rebate \$80, 2 case minimum			TOTAL DUE \$	

RULES: To receive your rebate, attach this coupon with copies of your foodservice distributor's invoice as proof of purchase for items #057562 and 075722 purchased between January 1 and December 31, 2023. One rebate per operator. Distributors, re-distributors, contract, bid or special priced customers do not qualify. Customer information must be completed in full. Handwritten invoices will not be accepted. Invoices must include operator and distributor name and addresses. No bulk or third party submissions will be accepted. Maximum rebate of \$80 per location. Rebate paid on lowest priced case. 2 case minimum. No cash value. This coupon cannot be used in conjunction with any other King & Prince Seafood® offer or contract priced item. Coupon void where taxed, prohibited or restricted. Good only in the USA. Allow 4 to 6 weeks for refund receipt.

Mail rebate before January 31, 2024 to:

King & Prince, P.O. Box 1002, Dexter, MN 55926

OR go online to redeem at: fspromos4u.com/kingandprince & enter Quick Access Code: 1067D1022

Questions?

Email: kingandprince@ibidata.com or call: 1.866.986.4920

To receive your rebate, please provide the following information. (Please print.)

Name _____

Title _____

Company _____

Address _____

City _____ State _____ Zip _____

Phone _____ Fax _____

Email _____

Include me on email offers from King & Prince Seafood®

Distributor _____ City/State _____

Foodservice Segment (Please check all that apply.)

Independent Restaurant Regional Chain National Chain QSR

Fast Casual Casual Dining Family Dining Cafeteria

Bar/Tavern B&I Healthcare Travel/Entertainment

College/University School K-12 Hotel/Motel Casino

Stadium/Arena Club Store Convenience Store Correctional Facility

Other _____

This coupon is reproducible.

[kpseafood.com](https://www.kpseafood.com)



1067D1022



New! Cholula® Street Taco Seasoning Mixes



Easily add the authentic flavor of Mexican street food to traditional Mexican dishes, meats, vegetables, and more!

THE CHOLULA DIFFERENCE

- Authentic Mexican flavor complemented by the right amount of heat – known and loved by consumers who ask for it by name.
- It's pre-blended, making it perfect for batch cooking that doesn't require skilled labor – ready to use and good to go!
- Prepared for back of the house use, these versatile seasonings can be used straight out of the pouch or mixed with other seasonings, sauces, and a variety of proteins for the ultimate signature menu item.

CHILE PEPPER CARNE ASADA SEASONING MIX

Made with a combination of chile peppers, cumin, paprika, cilantro, and other signature spices, this blend delivers bright and spicy flavors.

Item Code: 901603376 **Size:** 6/4.9 oz

SMOKY CHIPOTLE CARNITAS SEASONING MIX

Flavored with a robust blend of chipotle peppers, cumin, and other signature spices, this mix delivers that smoky carnitas taste patrons crave.

Item Code: 901603661 **Size:** 6/4.5 oz

Get recipes & savings! →

Street taco menu penetration has grown **+64.1%** over the past four years, with **82%** of patrons liking or loving tacos.

(Datassential)



Get recipe



Stay up to date with McCormick For Chefs! Subscribe to our NEW 'In Taste' Newsletter at McCormickForChefs.com/subscribe. Contact your McCormick sales representative today or visit us at McCormickforChefs.com to discover a fresh array of flavor profiles, ingredient combinations, recipes, and more.

McCormick & Company, Inc. US FlavorSolutions 24-1 Schilling Road • Hunt Valley, MD 21031 • 800-322-SPICE
©2023 McCormick & Company, Inc.

McCormickForChefs.com

[f](#) McCormickForChefs

[in](#) McCormickForChefs

[@](#) McCormick4Chefs

Mouthwatering Mexican-inspired menu ideas



Carne Asada Roasted Tri-tip Torta

Give patrons the flavor they crave with this Hispanic-inspired roast beef sandwich. Top with a trendy horseradish cheese and a quick aioli made with **Chile Pepper Carne Asada Seasoning Mix** and mayo.



Carne Asada Queso

This Mexican-inspired queso gets its flavor from caramelized onions, white American cheese, and **Chile Pepper Carne Asada Seasoning Mix**. Serve as a dip with tortilla chips or on burritos, chimichangas, and nachos.



Smoky Chipotle Pork Belly Bites

Roast tender and juicy pork bellies in the signature smoky Southwest flavors of **Smoky Chipotle Carnitas Seasoning Mix** to infuse flavor, then finish on the grill and serve over a refried black bean dip.

Buy one case and get a case on us!

PLEASE COMPLETE. ALL FIELDS REQUIRED.

Name of Establishment _____
Your Name _____
Title _____
Street Address _____
City/State/ZIP Code _____
Business Phone Number _____
Email Address _____
Distributor Name _____
City/State/ZIP Code _____
Sales Representative _____
Broker _____

Important: This rebate is not valid on cases ordered for resale. Distributors are not eligible for this rebate. Chains or affiliated groups must participate on an individual unit basis. Coupon void where prohibited or restricted. Offer good only in the continental United States and Hawaii. Must be mailed by the operator. Bulk submission from distributors not allowed.

Important Dates:

Invoice start date: January 1, 2023

Invoice end date: December 31, 2023

Postmarked request no later than: January 31, 2024

Primary Type of Operation:

- | | | | |
|--|---|---------------------------------------|---|
| <input type="checkbox"/> Business & Industry | <input type="checkbox"/> Cafeteria | <input type="checkbox"/> Catering | <input type="checkbox"/> College/University |
| <input type="checkbox"/> Convenience Store | <input type="checkbox"/> Correctional Institution | <input type="checkbox"/> Deli | <input type="checkbox"/> Family/Casual Dining |
| <input type="checkbox"/> Fast Food (QSR) | <input type="checkbox"/> Fine Dining | <input type="checkbox"/> Hospital | <input type="checkbox"/> Hotel/Motel |
| <input type="checkbox"/> In-Transit Feeder | <input type="checkbox"/> Military | <input type="checkbox"/> Nursing Home | <input type="checkbox"/> Recreational/Entertainment |
| <input type="checkbox"/> Retail Store | <input type="checkbox"/> School (K-12) | <input type="checkbox"/> Vending | |

Average Number of Meals Per Day:

- | | | | |
|--|--|--|--|
| <input type="checkbox"/> Under 100 Meals | <input type="checkbox"/> 100-299 Meals | <input type="checkbox"/> 300-499 Meals | <input type="checkbox"/> 500-999 Meals |
| <input type="checkbox"/> 1,000-1,999 Meals | <input type="checkbox"/> 2,000-4,999 Meals | <input type="checkbox"/> 5,000 + Meals | |

To speed up delivery of your check:

- Fill out this form completely. Purchase products within the start and end dates of this promotion.
- Attach the foodservice distributor invoice (membership clubs excluded) with the purchased product circled or highlighted. It must show the total amount purchased from January 1, 2023 – December 31, 2023.
- Allow 6-8 weeks for processing. Postmark on or before January 31, 2024.
- Check will be made out to and mailed to the foodservice establishment listed, not individuals.

Submit offer form and purchase verification:

Online: ror.realtime-solutions.com/mccormick

Email: McCormick@RealTime-Solutions.com

For inquiries: Call 855-552-9797

Mail: 2023 Cholula Street Taco Seasoning Rebate | c/o RealTime Solutions | P.O. Box 157 | Becker, MN 55308

1. Valid on qualifying purchases January 1, 2023 – December 31, 2023. Rebate amount is actual price paid excluding tax or delivery fees.
2. Completed form must be postmarked no later than January 31, 2024.
3. Valid for foodservice operators only. Claims may only be submitted by and made payable to verified foodservice operators.
4. Limit: 1 case / 1 redemption per foodservice location.
5. Invoices submitted with this offer may be used in conjunction with the McCormick Multi Brand rebate.
6. Copies of original invoices are required. No handwritten invoices accepted. Distributor tracking reports (velocity reports) or invoices must be dated during promotional period and include operator name, mailing address, invoice number, and purchase price.
7. Void if restricted, taxed, or forbidden by law. Offer may not be purchased, traded, or sold. Any other use constitutes fraud. Offer valid in the USA.
8. Please allow 6-8 weeks for processing.



Top Your Table with This Hot Offer

They'll Appreciate the Brands.
You'll Appreciate the Savings.



Flip Over to Get Your FREE Caddies and Products

Frank's RedHot® Original Cayenne Pepper Sauce

- The #1 Hot Sauce Brand in the World¹
- Delivers the Perfect Blend of Flavor and Heat™ to any meal

1 Euromonitor International Limited; based on custom research conducted July 2022 for volume sales (ounces/ml) in 2021 through all retail channels. Hot sauce is defined as a purely liquid spicy table sauce/condiment with vinegar as a substantial ingredient. Excludes chili pastes.

French's® Classic Yellow® Mustard

- The #1 Mustard Brand in the World²
- Made with #1 grade, stone-ground mustard seed

Cholula® Hot Sauce

- Cholula is the #1 Mexican Hot Sauce in the World³
- Balanced Authentic Mexican flavor and heat from a 100-year-old family recipe
- Premium, distinctive packaging patrons ask for by name

French's Tomato Ketchup

- No high-fructose corn syrup
- Non-GMO project verified and gluten free⁴

OLD BAY® Hot Sauce

- The iconic flavor of OLD BAY in a hot sauce
- Tangy with just the right amount of heat
- Adds the flavor of the Chesapeake to any dish

Bonus Program

McCormick® Sea Salt and Black Peppercorn Grinders

- Attractive, disposable glass bottle
- Eliminates the labor to refill
- Adjustable grinder for easy customization

2 Euromonitor International Limited, Packaged Food 2022ed, French's retail value sales, World, 2021 data.

3 Euromonitor International Limited; based on custom research conducted August 2022 for value sales in 2021 through all retail channels. Mexican Hot sauce defined as spicy table sauce/condiment that are manufactured in Mexico.

4 All Ketchup non-GMO except for 2/1.5 gallon.

5 Technomic 2019 Flavor Consumer Trend Report.

58%

of patrons prefer the ability to customize and/or choose from a variety of sauces for their food.⁵





Stay up to date with McCormick For Chefs! Subscribe to our NEW 'In Taste' Newsletter at McCormickForChefs.com/subscribe. Contact your McCormick sales representative today or visit us at McCormickforChefs.com to discover a fresh array of flavor profiles, ingredient combinations, recipes, and more.

McCormick & Company, Inc. US FlavorSolutions 24-1 Schilling Road • Hunt Valley, MD 21031 • 800-322-SPICE
©2023 McCormick & Company, Inc.

- McCormickForChefs.com
- McCormickForChefs
- McCormickForChefs
- McCormick4Chefs


Get up to 5 FREE Cases and 24 FREE Caddies

Buy at least one case of two of the products below to receive 24 FREE caddies (a \$240 value).

BRAND	PRODUCT	SKU #	PACK/SIZE	REBATE DESCRIPTION	INVOICED AMOUNT			
	Frank's RedHot® Original Cayenne Pepper Sauce	418055167	24/5 oz	1 FREE case	\$			
		418055267	12/12 oz					
	French's® Tomato Ketchup	901611175	12/20 oz	1 FREE case	\$			
		419559539	30/20 oz					
		418502600	12/8 oz					
	French's Classic Yellow® Mustard	417567741	12/12 oz	1 FREE case	\$			
		417660341	12/30 oz					
		Cholula® Original Hot Sauce	901614665			24/5 oz	1 FREE case	\$
			901614664			24/12 oz		
		Cholula Green Pepper Hot Sauce	901614666			24/5 oz	1 FREE case	\$
		Cholula Chipotle Hot Sauce	901614677			24/5 oz	1 FREE case	\$
		Cholula Chili Lime Hot Sauce	901607489			12/5 oz	1 FREE case	\$
		Cholula Chili Garlic Hot Sauce	901605214			12/5 oz	1 FREE case	\$
Cholula Sweet Habanero Hot Sauce	901607506	12/5 oz	1 FREE case	\$				
	OLD BAY® Hot Sauce	901579803	12/5 oz	1 FREE case	\$			

Yes, I've purchased at least two products. Send me 24 FREE caddies! Yes No, thanks

Bonus Program: Get \$50 Back

				OFFER DETAILS	REBATE AMOUNT
	McCormick® Sea Salt Grinder	900033011	36/6-2.12 oz	<input type="checkbox"/>	\$50
	McCormick Black Peppercorn Grinder	900033010	36/6-1.24 oz	Yes, I've purchased Salt and Pepper	

Required: Must participate in the above offer to qualify. Purchase one case each of McCormick Sea Salt and Black Peppercorn Grinders and get \$50 back.

PLEASE COMPLETE. ALL FIELDS REQUIRED.

Name of Establishment _____
 Number of Units _____
 Your Name _____
 Title _____
 Street Address _____
 City/State/ZIP Code _____
 Business Phone Number _____
 Email Address _____
 Distributor Name _____
 Broker Name _____
 Broker Market _____
 Signature _____

CHECK WILL BE MADE PAYABLE TO:

Name of Establishment _____
 Mailing Address _____
 City/State/ZIP Code _____
 Business Phone Number _____
 Distributor Name _____

Restaurant Information: check all that apply

Menu Type:

- | | | | |
|-----------------------------------|------------------------------------|--|--------------------------------|
| <input type="checkbox"/> American | <input type="checkbox"/> Breakfast | <input type="checkbox"/> Mexican | <input type="checkbox"/> Wings |
| <input type="checkbox"/> Asian | <input type="checkbox"/> Burgers | <input type="checkbox"/> Pizza | <input type="checkbox"/> Other |
| <input type="checkbox"/> BBQ | <input type="checkbox"/> Italian | <input type="checkbox"/> Sandwiches/Deli | |

Primary Type of Operation:

- | | | | |
|--|--|---|---|
| <input type="checkbox"/> Business & Industry | <input type="checkbox"/> Fast Casual | <input type="checkbox"/> Healthcare | <input type="checkbox"/> Cafeteria/Buffer |
| <input type="checkbox"/> Catering | <input type="checkbox"/> Fine Dining | <input type="checkbox"/> K-12 | <input type="checkbox"/> Other |
| <input type="checkbox"/> College/University | <input type="checkbox"/> Full Service Restaurant | <input type="checkbox"/> Quick Service Restaurant | |

Submit offer form and purchase verification:

Online: ror.realtime-solutions.com/mccormick

Email: McCormick@RealTime-Solutions.com

For inquiries: Call 855-552-9797

Mail: 2023 Tabletop Rebate | c/o RealTime Solutions
 P.O. Box 157 | Becker, MN 55308

1. Valid on qualifying purchases January 1, 2023–December 31, 2023. Max. product rebate value: \$325. Max. caddy savings value: \$240. Limit 1 case redemption per item. **2.** Completed form with proof of purchase must include distributor name, location, product description, pack/size and be postmarked by January 31, 2024. **3.** Valid for foodservice operators only. Claims may only be submitted by, and made payable to, verified foodservice operators. **4.** ONE redemption form per Foodservice location. Chains or franchise groups must submit on an individual unit basis. **5.** Operators on National Account and/or Deviated Pricing Programs MAY NOT REDEEM on products under contract. **6.** Valid on full-case purchases. Cannot combine individual units to equal a full case. **7.** Copies of original INVOICES or DISTRIBUTOR TRACKING REPORTS required as proof of purchase. No handwritten reports accepted. Proof of purchase must be dated during promotional period and include operator name, address, invoice number, and purchase price. **8.** Void if restricted, taxed, or forbidden by law. Offer may not be purchased, traded, or sold. Any other use constitutes fraud. Offer valid only in the USA. **9.** Please allow 6–8 weeks for processing. **10.** Caddies will be shipped to the Street Address entered and checks will be mailed to the Mailing Address on the left.

By submitting this form, you are electing to receive email on the latest offers, products, culinary tips, recipes, tools, and trends from McCormick For Chefs®. If you would rather not receive our communication, please check the "no" box. No, thank you.



HOLIDAY STUFFING

– CUSTOMER REBATE –

**SAVE UP TO
\$550**




**CUSTOMER REBATE
UP TO \$550 SAVINGS**

Save up to \$550 on Holiday Stuffing and Crispy Onions. Products must be purchased between October 1 and December 31, 2023.

2023

CUSTOMER REBATE: UP TO \$550 SAVINGS

DATE: _____ PO#: _____

PRODUCT	PACK	LABEL	DOT CODE#	SFC CODE#	CASES/PALLET	CASES PURCHASED	REBATE	TOTAL REBATE
TRADITIONAL STUFFING (minimum 5 cs, maximum 50 cs)	6/55oz		577594	75685	24	_____	\$5/case	_____
CORNBREAD STUFFING (minimum 5 cs, maximum 50 cs)	6/56oz		577596	75686	24	_____	\$5/case	_____
CRISPY ONIONS (minimum 5 cs, maximum 50 cs)	6/24oz		539007	55618	36	_____	\$1/case	_____
Total Rebate:							_____	_____

MUST PURCHASE STUFFING TO RECEIVE REBATE ON CRISPY ONIONS

Coupons must be submitted with distributor invoice attached.
Valid on orders shipped between October 1 and December 31, 2023.

COMPLETE THIS FORM AND SAVE

Request for rebate must be received by January 31, 2024.

Please allow 8 weeks for processing of coupon rebate and issuing of rebate checks.

All information must be filled out below. One rebate offer per location.

Mail to:

Holiday Stuffing Redemption Services
P.O. Box 552
Traverse City, MI 49685-0552

For Questions:

888-708-2222

NAME _____ TITLE _____

ESTABLISHMENT/NAME OF BUSINESS _____ DATE _____

STREET ADDRESS _____

CITY, STATE, ZIP _____

PHONE NUMBER _____

FAX NUMBER _____

E-MAIL ADDRESS _____

DISTRIBUTOR _____ DISTRIBUTOR SALES REP. _____

TERMS AND CONDITIONS: Coupon and invoices must be postmarked by January 31, 2024. Limit of one (1) rebate per establishment. Original coupons only, no copies. Offer valid for individual foodservice establishments only. Chain accounts and franchisees are not eligible. Offer not available to distributors. Void where prohibited, taxed or distribution is not available. Coupons may not be combined with other manufacturers' rebate offer. Offer only good on products purchased between October 1, 2023 and December 31, 2023. Please allow 8 weeks for processing coupons and issuing rebate checks.

Operators, it's time to WING it and earn BIG!

WING DINGS® | Wing-Zings®

\$1,000
max savings



SEIZE THE SIZZLING OPPORTUNITY
Redeem your rebate and let your wings take flight in taste and savings!

Unlock unbeatable savings on our premium Wing Ding's® & Wing Zing's® chicken wings! Elevate your menu offerings and delight your customers with these flavorful wings. Act now to claim your exclusive operator's rebate and spice up your profits. **DON'T MISS** this chance to boost your culinary game and maximize your returns.

Product Code	Distributor Code	Product	Weight (lb)	Rebate \$/Case
BREADED BONE-IN WINGS				
60150	252925	Fully Cooked Bone-In Wing Zings® Hot and Spicy Breaded Chicken Wings	2/7.5	\$10/Case
61015	252870	Fully Cooked Bone-In Wing Dings® Medium Gourmet Seasoned Breaded Chicken Wings	2/7.5	\$10/Case
65715	252861	Fully Cooked Bone-In Wing Dings® Gourmet Seasoned Breaded Chicken Wings	2/7.5	\$10/Case
71015	n/a	Fully Cooked Bone-In Wing Zings® Hot and Spicy Breaded Chicken Wings, Large	2/7.5	\$10/Case
71025	n/a	Fully Cooked Bone-In Wing Zings® Hot and Spicy Breaded Chicken Wings, Medium	3/8.3	\$15/Case
BREADED BREAST CHUNKS				
111125	259926	Fully Cooked Pierce Chicken® Breaded Boneless Skinless Chicken Breast Chunks Smoke Flavor Added	2/5	\$5/Case
111355	259927	Fully Cooked Boneless Zing™ Spicy Breaded Boneless Skinless Chicken Breast Chunks	2/5	\$5/Case
UNBREADED BONE-IN WINGS				
110335	n/a	Fully Cooked Bone-In Pierce Chicken® Savory Chicken Wings, 1 st and 2 nd Sections Super Jumbo	3/8.33	\$15/Case

Why Wing Ding® and Wing Zing® for your menu?

60%

OF WINGS SOLD at restaurants are BONE-IN WINGS¹

Wing Dings® and Wing Zings® products make it easy for you to do your thing. Count on outstanding flavor, premium quality and consistent results every time.

- **Easy to prep:** No breading or handling concerns.
- **Fully cooked:** Delivers faster cook times and enhances food safety.
- **Customizable:** Ready for your signature sauces.
- **No surprises:** Consistent usable piece count with every product, every time.
- **Great hold times:** Stays delicious both in-house and over the road for delivery.
- **Long shelf life:** Allows for planning ahead to meet ongoing demand.

¹ Datassential Flavor Survey, December 2022.

STEP 1. RECORD YOUR PURCHASES.

Product Description	Product Code	Number of Cases		Rebate \$		Reward Earned
<i>Example:</i> Fully Cooked Bone-In Wing Zings® Hot and Spicy Breaded Chicken Wings	60150	25	x	10	=	\$250
			x		=	
			x		=	
			x		=	
			x		=	
GRAND TOTAL						

STEP 2. REDEEM THIS REBATE.

PLEASE ENCLOSE YOUR DISTRIBUTOR INVOICES AND COMPLETE YOUR INFORMATION BELOW:

Name: _____

Title: _____

Name of Operation: _____

Type of Operation: _____

Address (No PO Boxes): _____

City: _____ State: _____

Zip: _____ Phone: _____

Email: _____

Distributor Name: _____

Signature: _____

Provide distributor invoices proving purchases made 10/01/2023 to 12/31/2023. Invoices must be post marked by 1/30/2023 to qualify. \$1,000 max redemption per location. New Business Only; one redemption per location per promotion window. Fill out this coupon with your original distributor invoice(s) or original distributor tracking report(s) with qualifying purchases highlighted as proof of purchase and mail to:

WING REBATE Q4 2023
Mail To:
 Attn: Pilgrim's Customer Care
 P.O. Box 846 Brunswick, OH 44212
 800-837-5352
Email to:
 _imt.rebates.admin@imtco.com
 RBT090

VALID DATES ARE 10/01/2023 - 12/31/2023

For more information, please contact your Waypoint broker or Pilgrim's sales contact. Operators must submit their own payment request with signature as proof of authenticity. Send original distributor invoice(s) or original distributor tracking report(s). Offer valid only on products listed above. This offer applies to licensed food service operators only and does not apply to bid or contract customers. Rebate does not apply to wholesalers or distributors. This offer may not be used with any other Pilgrim's promotion. One coupon/redemption per food service operation. Please allow 6 to 8 weeks from promotional period closing to receive your rebate check. Void where prohibited.





Pies are always in Season!

SAVE \$5/CASE UP TO \$500 ON SELECT PIES!

Valid July 1 – December 31, 2023

Name of Operation _____

First and Last Name _____

Mailing Address _____

City _____

Telephone _____

Email _____ Check box to receive emails from the Sara Lee Frozen Bakery family of brands.

Distributor Name _____ Distributor City, State _____

TYPE OF OPERATION: (check one)

Non-Commercial/Beyond Restaurant/Onsite Feeding

- Business & Industry
- Casinos/Gambling
- Hospitals
- Corrections
- Traditional Nursing Homes
- Supermarket Deli
- Retirement Communities
- Mass Merchandisers
- Colleges & Universities
- Recreation
- Vending
- Airlines/Travel
- Office Coffee Service (OCS)
- Cruise Lines
- Stadiums/Arenas
- Lodging

Commercial Restaurants

- Traditional QSR/Fast Food
- Bars & Taverns
- Fast Casual/Quick Casual
- Traditional Bakeries
- Midscale/Family Dining
- Farm Stands
- Casual Dining
- Convenience Stores
- Fine Dining

Average Number of Meals Served Per Day

- Under 100 Meals
- 100-299
- 300-499
- 500-599
- 600-999
- 1,000-1,999
- 2,000-4,999
- 5,000 or more

How did you hear about this program?

- Sales Rep
- Distributor Sales Rep
- Tradeshow
- Website
- Email _____
- Other _____

Product Code	Product Description	Cases Purchased	Rebate per Case	Total Rebate
00879	Apple Lattice Pre-Baked Pre-Sliced Pie (8 slices)	x \$5.00 =
00880	Sweet Potato Pre-Baked Pre-Sliced Pie (8 slices)	x \$5.00 =
00888	Cherry Lattice Pre-Baked Pre-Sliced Pie (8 slices)	x \$5.00 =
00889	Blueberry Lattice Pre-Baked Pre-Sliced Pie (8 slices)	x \$5.00 =
04580	Chocolate & Peanut Butter Crème de la Cream Pie	x \$5.00 =
05035	Blueberry Lattice Traditional Pre-Baked Pie	x \$5.00 =
05059	Blackberry Unbaked Hi-Pie*	x \$5.00 =
05095	Chocolate & Peanut Butter Silk Pie	x \$5.00 =
05481	Caramel Apple Nut Hi-Pie*	x \$5.00 =
05482	Blueberry Unbaked Krunch Pie	x \$5.00 =
05483	Cherry Unbaked Krunch Pie	x \$5.00 =
05485	Peachberry Unbaked Hi-Pie*	x \$5.00 =
05876	Coconut Crème de la Cream Pie	x \$5.00 =
05888	Crème de la Cream Pie Variety Pack	x \$5.00 =
07106	No Sugar Added Cherry Pie	x \$5.00 =
07108	No Sugar Added Apple Pie	x \$5.00 =
07114	No Sugar Added Chocolate Cream Pie	x \$5.00 =
07120	No Sugar Added Coconut Cream Pie	x \$5.00 =
07126	Apple Lattice Pre-Baked Pie	x \$5.00 =
07129	Apple Pre-Baked Pie	x \$5.00 =
07130	No Sugar Added Cherry Unbaked Hi-Pie*	x \$5.00 =
07132	No Sugar Added Fruits of the Forest Unbaked Hi-Pie*	x \$5.00 =
07136	Chocolate Meringue Pie	x \$5.00 =
07160	Icebox Key West Lime Pie	x \$5.00 =
07165	Pecan Pre-Sliced Pie (8 slices)	x \$5.00 =
07181	Chocolate Cream Layer Pie	x \$5.00 =
07185	Chocolate Mint Cream Layer Pie	x \$5.00 =
09263	Wild Berry Unbaked Hi-Pie*	x \$5.00 =
09267	Sweet Potato Pre-baked Pie	x \$5.00 =
09270	Apple Unbaked Hi-Pie*	x \$5.00 =
09275	Cherry Unbaked Pie	x \$5.00 =
09278	Cherry Unbaked Hi-Pie*	x \$5.00 =
09282	Blueberry Unbaked Hi-Pie*	x \$5.00 =
09283	Peach Unbaked Hi-Pie*	x \$5.00 =
09284	Apple Razzberry Unbaked Hi-Pie*	x \$5.00 =
09285	Fruits of the Forest Unbaked Hi-Pie*	x \$5.00 =
09288	Apple Cranberry Unbaked Hi-Pie*	x \$5.00 =
09289	Strawberry Rhubarb Unbaked Hi-Pie*	x \$5.00 =
09290	Dutch Apple Unbaked Hi-Pie*	x \$5.00 =
09297	Chocolate Crème de la Cream Pie	x \$5.00 =
09298	Cookies & Cream Crème de la Cream Pie	x \$5.00 =
09299	French Silk Pie	x \$5.00 =
09363	Rhubarb Unbaked Hi-Pie*	x \$5.00 =
09366	Dutch Apple Unbaked Pre-Sliced Hi-Pie* (8 slices)	x \$5.00 =
09372	No Sugar Added Pumpkin Pre-Sliced Pie (8 slices)	x \$5.00 =

Total Rebate _____

Redeem online at www.fspromos4u.com/saralee and enter the Quick Access Code: FallDessert23 or mail completed form to:

Sara Lee Frozen Bakery:
c/o FallDessert23
PO Box 2040
Brownsdale, MN 55918

Online redemptions encouraged
Photocopies accepted

TERMS & CONDITIONS: Valid only for product codes listed in this offer. Promotion period is July 1, 2023-December 31, 2023. All items listed on this offer can be purchased at any time during the promotional period. Offer applies only to foodservice operators, and payment must be sent directly to the operator. One coupon/redemption per location or headquarters address. Headquarters may submit for multiple locations and request one combined rebate check; however, reporting must show individual store addresses and purchase information. This offer is not valid for school or military bids and operator members of Group Purchasing Organizations. Offer does not apply to Resale, Bid, Contract Business, National Accounts and Franchise affiliated groups. Any other use constitutes fraud. Sara Lee Frozen Bakery Teams has final decision on the interpretation of the terms & conditions of this program and reserves the right to cancel this program at any time. Void where prohibited. Distributor invoices or tracking reports must accompany rebate form and include Sara Lee Frozen Bakery item numbers, operator & distributor, business name and appropriate purchase dates. Submission must be postmarked by January 31, 2024. Allow 6-8 weeks for fulfillment. Not valid in conjunction with any other Sara Lee Frozen Bakery offer. Limit \$500.



Try our new Chocolate French Cream Cheesecake and Save!

**SAVE \$5 or \$10* A CASE UP TO
\$500 ON SELECT CHEESECAKES!**

Valid July 1 – December 31, 2023



Name of Operation

First and Last Name

Mailing Address

City

Telephone

Email Check box to receive emails from the Sara Lee Frozen Bakery family of brands.

Distributor Name Distributor City, State

TYPE OF OPERATION: (check one)

**Non-Commercial/Beyond
Restaurant/Onsite Feeding**

- Business & Industry
- Casinos/Gambling
- Hospitals
- Corrections
- Traditional Nursing Homes
- Supermarket Deli
- Retirement Communities
- Mass Merchandisers
- Colleges & Universities
- Recreation
- Vending
- Airlines/Travel
- Office Coffee Service (OCS)
- Cruise Lines
- Stadiums/Arenas
- Lodging

Commercial Restaurants

- Traditional QSR/Fast Food
- Bars & Taverns
- Fast Casual/Quick Casual
- Traditional Bakeries
- Midscale/Family Dining
- Farm Stands
- Casual Dining
- Convenience Stores
- Fine Dining

**Average Number of
Meals Served Per Day**

- Under 100 Meals
- 100-299
- 300-499
- 500-599
- 600-999
- 1,000-1,999
- 2,000-4,999
- 5,000 or more

**How did you hear about
this program?**

- Sales Rep
- Distributor Sales Rep
- Tradeshow
- Website
- Email
- Other _____



Product Code	Product Description	Cases Purchased	Rebate per Case	Total Rebate
08018	Plain French Cream Cheesecake 8"x15" Tray	_____	x \$5.00 =	_____
08076	Plain French Cream Cheesecake 10" Round	_____	x \$5.00 =	_____
New! 20272	Chocolate French Cream Cheesecake 8"x15" Tray	_____	x \$10.00 =	_____
07117	Plain No Sugar Added New York Style Pre-Sliced (16 slices)	_____	x \$5.00 =	_____
08065	Plain Creamy New York Style Pre-Sliced (16 slices)	_____	x \$5.00 =	_____
08074	Plain New York Style Pre-Sliced (16 slices)	_____	x \$5.00 =	_____
08077	Plain Hi-Rise® New York Style Pre-Sliced (16 slices)	_____	x \$5.00 =	_____
08078	Plain New York Style Pre-Sliced (16 slices)	_____	x \$5.00 =	_____
08117	Plain Tall New York Style Pre-Sliced (14 slices)	_____	x \$5.00 =	_____
			Total Rebate	_____

*\$10 rebate only available on the new Chocolate French Cream Cheesecake



Redeem online at www.fspromos4u.com/saralee
and enter the Quick Access Code: FallDessert23
or mail completed form to:

Sara Lee Frozen Bakery:
c/o FallDessert23
PO Box 2040
Brownsdale, MN 55918

Online redemptions encouraged
Photocopies accepted

TERMS & CONDITIONS: Valid only for product codes listed in this offer. Promotion period is July 1, 2023 - December 31, 2023. All items listed on this offer can be purchased at any time during the promotional period. Offer applies only to foodservice operators, and payment must be sent directly to the operator. One coupon/redemption per location or headquarters address. Headquarters may submit for multiple locations and request one combined rebate check; however, reporting must show individual store addresses and purchase information. This offer is not valid for school or military bids and operator members of Group Purchasing Organizations. Offer does not apply to Resale, Bid, Contract Business, National Accounts and Franchise affiliated groups. Any other use constitutes fraud. Sara Lee Frozen Bakery Teams has final decision on the interpretation of the terms & conditions of this program and reserves the right to cancel this program at any time. Void where prohibited. Distributor invoices or tracking reports must accompany rebate form and include Sara Lee Frozen Bakery item numbers, operator & distributor, business name and appropriate purchase dates. Submission must be postmarked by January 31, 2024. Allow 6-8 weeks for fulfillment. Not valid in conjunction with any other Sara Lee Frozen Bakery offer. Limit \$500.



FEATURED PRODUCTS

SEPTEMBER 28, 2023—DECEMBER 31, 2023

Smithfield FRESH BREAKFAST SAUSAGE				
ITEM CODE	PRODUCT DESCRIPTION	\$/CS	CASES	TOTAL
70247131096	SMITHFIELD SAUSAGE LINKS, SILVER MEDAL, 1 OZ LINK, 10 LB, FROZEN	\$2.00		
10070100020595	SMITHFIELD SAUSAGE LINKS, SILVER MEDAL, COLLAGEN CASING, 8 COUNT, 10 LB, FROZEN	\$2.00		
10070100020571	SMITHFIELD SAUSAGE LINKS, SILVER MEDAL, COLLAGEN CASING, 16 COUNT, 10 LB, FROZEN	\$2.00		
70247133359	FARMLAND SAUSAGE PATTY, FMX, BRONZE MEDAL, 2 OZ, 12 LB, FROZEN	\$2.00		
70100020208	SMITHFIELD SAUSAGE ROLL, SILVER MEDAL, 8/3 LB, FROZEN	\$2.00		
10070247130102	SMITHFIELD SAUSAGE ROLL, SILVER MEDAL, 58% LEAN, 2/6 LB, FROZEN	\$2.00		

Smithfield READY TO EAT BACON: STRIPS				
ITEM CODE	PRODUCT DESCRIPTION	\$/CS	CASES	TOTAL
10070247125009	SMITHFIELD FULLY COOKED BACON, SILVER MEDAL, SLICED, 0.4 OZ, 300 COUNT, 2/1.605 LB	\$5.00		
10070247171051	SMITHFIELD FULLY COOKED BACON, GOLD MEDAL, SUPER THICK SLICED, 0.5 OZ, 150 COUNT, 2/2.5 LB	\$5.00		
10070247172331	SMITHFIELD FULLY COOKED BACON, BRONZE MEDAL, SLICED, 300 COUNT, 2/1.25 LB	\$5.00		
20043200126310	SMITHFIELD FULLY COOKED BACON SLICES, 7 SLICES PER INCH, 300 COUNT, APPLEWOOD	\$5.00		
10070800222794	SMITHFIELD ROASTED BACON THICK SLICES, 7-9 SLICES PER INCH, 320 COUNT NEW ITEM!	\$5.00		
10070800222800	SMITHFIELD ROASTED BACON SLICES, 7-9 SLICES PER INCH, 320 COUNT NEW ITEM!	\$5.00		

Smithfield READY TO EAT BACON: DICED, CHIPS, BITS				
ITEM CODE	PRODUCT DESCRIPTION	\$/CS	CASES	TOTAL
10070800142290	SMITHFIELD FULLY COOKED BACON BITS, 1/4" DICED, 2/5 LB, SCANNABLE	\$5.00		
10070247172881	SMITHFIELD FULLY COOKED BACON CHIPS, 1/8" DICED, 2/5 LB	\$5.00		
10043200120021	SMITHFIELD FULLY COOKED BACON BITS, 1/4" DICED, 2/5 LB, APPLEWOOD	\$5.00		
10070247172874	SMITHFIELD FULLY COOKED BACON BITS, 1/4" DICED, 2/5 LB	\$5.00		
10043200120038	SMITHFIELD FULLY COOKED BACON BITS, 1/2" DICED, 2/5 LB	\$5.00		

Smithfield READY TO COOK BACON STRIPS				
ITEM CODE	PRODUCT DESCRIPTION	\$/CS	CASES	TOTAL
70247157256	SMITHFIELD RTC BACON, GOLD MEDAL, SINGLE SLICE, 14-18 SLICES PER LB, 15 LB, GAS-FLUSHED	\$2.00		
70247123244	SMITHFIELD RTC BACON, GOLD MEDAL, SINGLE SLICE, 18-22 SLICES PER LB, 15 LB, GAS-FLUSHED	\$2.00		
70247171863	SMITHFIELD RTC BACON, GOLD MEDAL, APPLE CIDER SINGLE SLICE, 14-18 SLICES PER LB, 15 LB, GAS-FLUSHED	\$2.00		
70800179077	SMITHFIELD RTC BACON, SINGLE SLICE APPLEWOOD SMOKED LOG, PLATINUM, 10-14 SLICES PER LB, 15 LB, GAS-FLUSHED	\$2.00		
70247125460	SMITHFIELD RTC BACON, GOLD MEDAL, LOWER SODIUM SINGLE SLICE, 18-22 SLICES PER LB, 15 LB, FROZEN, GAS-FLUSHED	\$2.00		
70247158246	SMITHFIELD RTC BACON, SILVER MEDAL, SINGLE SLICE, 14-18 SLICES PER LB, 15 LB, FROZEN	\$2.00		
70247158253	SMITHFIELD RTC BACON, SILVER MEDAL, SINGLE SLICE, 18-22 SLICES PER LB, 15 LB, FROZEN	\$2.00		
70247174987	SMITHFIELD RTC BACON, SILVER MEDAL, UNCURED SINGLE SLICE, 13-17 SLICES PER LB, 15 LB, GAS-FLUSHED	\$2.00		
70247158635	SMITHFIELD RTC BACON, GOLD MEDAL, HRI DOUBLE SMOKED SINGLE SLICE, 14-18 SLICES PER LB, 15 LB, GAS-FLUSHED, FROZEN	\$2.00		
70247158642	SMITHFIELD RTC BACON, GOLD MEDAL, HRI DOUBLE SMOKED SINGLE SLICE, 18-22 SLICES PER LB, 15 LB, GAS-FLUSHED, FROZEN	\$2.00		

Smithfield LUNCH MEAT / COLD CUTS				
ITEM CODE	PRODUCT DESCRIPTION	\$/CS	CASES	TOTAL
10070247821413	SMITHFIELD SLICED BOLOGNA, 12/1 LB	\$2.00		
10070247821420	SMITHFIELD COTTO SALAMI, SILVER MEDAL, 12/1 LB, GAS-FLUSHED	\$2.00		

Smithfield PRE-COOKED BREAKFAST SAUSAGE				
ITEM CODE	PRODUCT DESCRIPTION	\$/CS	CASES	TOTAL
70247137623	SMITHFIELD FULLY COOKED SAUSAGE LINK, SILVER MEDAL, 10 LB, FROZEN	\$4.00		
25468211058	SMITHFIELD FULLY COOKED SKIN-ON SAUSAGE LINK, SILVER MEDAL, ORIGINAL, 1 OZ, CHILD NUTRITION, 10 LB, FROZEN	\$4.00		
70247137616	SMITHFIELD FULLY COOKED SAUSAGE SKIN-ON LINK, SILVER MEDAL, 0.8 OZ, 10 LB, FROZEN	\$2.00		
70247140722	SMITHFIELD FULLY COOKED SAUSAGE LINK, SILVER MEDAL, 1.4 OZ LINKS, 10 LB, FROZEN	\$4.00		

Smithfield SMOKED BONELESS HAMS				
ITEM CODE	PRODUCT DESCRIPTION	\$/CS	CASES	TOTAL
90070247126415	SMITHFIELD HONEY & BROWN SUGAR PIT HAM, SILVER MEDAL, 2/16 LB, RANDOM WEIGHT	\$2.00		
90070247195558	SMITHFIELD CARVEMASTER APPLEWOOD HAM WITH NATURAL JUICES, GOLD MEDAL, 2/7.65 LB, RANDOM WEIGHT	\$2.00		
90070247128594	SMITHFIELD ORIGINAL PIT HAM, SILVER MEDAL, SMOKED, 2/14 LB, RANDOM WEIGHT	\$2.00		
90070247191727	SMITHFIELD HAM WITH NATURAL JUICES, GOLD MEDAL, BONELESS SMOKED, 2/9.2 LB, RANDOM WEIGHT	\$2.00		
90027815002169	ECKRICH PINEAPPLE SPICY CARVER HAM, NATURAL JUICES, 2/20 LB, RANDOM WEIGHT NEW ITEM!	\$2.00		

Smithfield SPECIALTY CUT HAM				
ITEM CODE	PRODUCT DESCRIPTION	\$/CS	CASES	TOTAL
10070247129632	SMITHFIELD DICED HAM, SILVER MEDAL, SMOKED, WATER ADDED, 1/2 INCH CUBES, 2/5 LB, FROZEN	\$2.00		
10070247141610	SMITHFIELD DICED HAM, SILVER MEDAL, SMOKED, WATER ADDED, 1/4 INCH CUBES, 2/5 LB, FROZEN	\$2.00		
90070247127054	SMITHFIELD CANADIAN HAM, GOLD MEDAL, 95% FAT FREE, 4/3.85 LB, RANDOM WEIGHT	\$2.00		

Smithfield COOK IN BAG HAM				
ITEM CODE	PRODUCT DESCRIPTION	\$/CS	CASES	TOTAL
10070247290189	SMITHFIELD CHOPPED HAM, WATER ADDED, 5/10 LB	\$2.00		
90070247290161	SMITHFIELD HONEY HAM, BONELESS, WATER ADDED, 2/13 LB, RANDOM WEIGHT	\$2.00		
90070247290154	SMITHFIELD VIRGINIA HAM, BONELESS, WATER ADDED, 2/12 LB, RANDOM WEIGHT	\$2.00		
10070247193824	SMITHFIELD ROYAL DANISH HAM, 97% FAT FREE, 4X6 WATER ADDED, 2/13 LB	\$2.00		
10070247193831	SMITHFIELD COOKED HAM, 4X6, WATER ADDED, 2/13 LB	\$2.00		
10070247193817	SMITHFIELD COOKED HAM, 4X6, HAM AND WATER, 2/13 LB	\$2.00		

Smithfield SMOKED SAUSAGE				
ITEM CODE	PRODUCT DESCRIPTION	\$/CS	CASES	TOTAL
20027815179848	SMITHFIELD SMOK-YS CHEDDAR SMOKED SAUSAGE LINK, 10/1.03 LB	\$5.00		
20027815179855	SMITHFIELD SMOK-YS ORIGINAL SMOKED SAUSAGE LINK, 10/1.03 LB	\$5.00		
10070247140194	SMITHFIELD SMOKED SAUSAGE, BIAS CUT, 2/5 LB, GAS-FLUSHED	\$5.00		
10070247175219	SMITHFIELD MAPLE SMOKED SAUSAGE, BIAS CUT, 2/5 LB, GAS-FLUSHED	\$5.00		

OPERATOR

Operators earn up to \$250!



FEATURED PRODUCTS

SEPTEMBER 28, 2023—DECEMBER 31, 2023

Margherita NO CHAR PEPPERONI				
ITEM CODE	PRODUCT DESCRIPTION	\$/CS	CASES	TOTAL
20027815220151	MARGHERITA NO CHAR PEPPERONI, SLICED, 14-16 SLICES PER LB, 2/12.5 LB	\$5.00		
20027815220144	MARGHERITA PEPPERONI, SLICED, 14-16 COUNT, 2/5 LB	\$2.00		
20027815220106	MARGHERITA PEPPERONI, SLICED, 14-16 SLICES, 2/12.5 LB	\$5.00		

Margherita CUP 'N CHAR PEPPERONI				
ITEM CODE	PRODUCT DESCRIPTION	\$/CS	CASES	TOTAL
20027815220168	MARGHERITA PEPPERONI, COLLAGEN CASING, SLICED, 2/12.5 LB	\$5.00		

Smithfield SMOKE'NFAST SMOKE'NFAST PULLED & SHREDDED MEATS				
ITEM CODE	PRODUCT DESCRIPTION	\$/CS	CASES	TOTAL
10704051269047	SMITHFIELD SMOKE'NFAST SHREDDED PORK SHOULDER, SAUCELESS, 2/5 LB, FROZEN	\$2.00		

Smithfield SMOKE'NFAST SMOKE'NFAST ETHNIC				
ITEM CODE	PRODUCT DESCRIPTION	\$/CS	CASES	TOTAL
90704051270223	SMITHFIELD SMOKE'NFAST BEEF BARBACOA, 10/3 LB, FROZEN, RANDOM WEIGHT	\$2.00		
90704051269265	SMITHFIELD SMOKE'NFAST PORK CARNITAS, 6/5 LB, FROZEN, RANDOM WEIGHT	\$2.00		

Smithfield SMOKE'NFAST SMOKE'NFAST BEEF				
ITEM CODE	PRODUCT DESCRIPTION	\$/CS	CASES	TOTAL
90704051267023	SMITHFIELD SMOKE'NFAST WHOLE BEEF BRISKET, HICKORY SMOKED, 2/8 LB, FROZEN, RANDOM WEIGHT	\$2.00		

Smithfield SMOKE'NFAST SMOKE'NFAST KC WILD WINGS				
ITEM CODE	PRODUCT DESCRIPTION	\$/CS	CASES	TOTAL
10070247192124	SMITHFIELD SMOKE'NFAST KC WILD WINGS, 3/3 LB, FROZEN (40Z WING)	\$2.00		
00070247194558	SMITHFIELD SMOKE'NFAST KC WILD WINGS, MINI, 2/5 LB, FROZEN (20Z WING)	\$2.00		

Margherita CUP 'N CRISP PEPPERONI				
ITEM CODE	PRODUCT DESCRIPTION	\$/CS	CASES	TOTAL
10043200154309	MARGHERITA SPICY PEPPERONI, SLICED, 38MM, 2/12.5 LB, GAS-FLUSHED, FROZEN	\$5.00		
20043200154313	MARGHERITA PEPPERONI, SPICY, SLICED, 38MM, 2/5 LB, GAS-FLUSHED	\$2.00		

Margherita SPECIALTY ITALIAN				
ITEM CODE	PRODUCT DESCRIPTION	\$/CS	CASES	TOTAL
10038616300372	MARGHERITA PEPPERONI, SLICED, SANDWICH SIZE, 8/2 LB, GAS-FLUSHED, FROZEN	\$2.00		
10038616300389	MARGHERITA GENOA SALAMI, SANDWICH SIZE SLICED, 8/2 LB	\$2.00		
10038616300396	MARGHERITA HARD SALAMI, SANDWICH SIZE SLICED, 8/2 LB	\$2.00		
90038616366602	MARGHERITA GENOA SALAMI, 3/6.2 LB, RANDOM WEIGHT	\$2.50		
90038616365612	MARGHERITA HARD SALAMI, 3/6.7 LB, RANDOM WEIGHT	\$2.50		

CARANDO HANDHELDS				
ITEM CODE	PRODUCT DESCRIPTION	\$/CS	CASES	TOTAL
20076033351703	CARANDO PEPPERONI CALZONE, 12/6 OUNCE, FROZEN	\$2.00		
20076033351710	CARANDO MEATBALL CALZONE, 12/6 OUNCE, FROZEN	\$2.00		
20076033101957	CARANDO PIZZA RIP N DIP, 12/8.5 OUNCE, FROZEN	\$2.00		
20076033101964	CARANDA PIZZA PEPPERONI RING, 12/8.5 OUNCE, FROZEN	\$2.00		



REDEEM REBATE IN 10 MIN OR LESS!
SUBMIT ALL THE FORMS VIA RAPIDREBATE.NET

1. Log on to RapidRebate.net
2. Add product info; upload invoices
3. Submit and check status

INSTRUCTIONS FOR SUBMITTING THIS REBATE:

- 1 Use the grids on the front and back of this page to indicate the number of cases of each product code purchased during the eligible period.
- 2 Put the total number of cases purchased in the boxes below.
- 3 Put the total \$ amount of the requested rebate in the boxes below.
- 4 Complete the contact info (below) and segment info (right) and mail the form, along with required printout/invoice copies, to the address at right.

MAXIMUM PAYOUT IS \$250 / MINIMUM PAYOUT IS \$20

# of \$2 CS:	X \$2.00/CS:	= Total \$:
# of \$2.50 CS:	X \$2.50/CS:	= Total \$:
# of \$3 CS:	X \$3.00/CS:	= Total \$:
# of \$5 CS:	X \$5.00/CS:	= Total \$:

CHECK WILL BE MAILED TO THE ADDRESS SHOWN BELOW (PLEASE PRINT)

OPERATION NAME:	CONTACT NAME:		
E-MAIL ADDRESS:			
OPERATION ADDRESS:			
CITY:	STATE:	ZIP:	
TELEPHONE NUMBER:	FAX NUMBER:		
DISTRIBUTOR:	DSR NAME:		

Terms and Conditions:

Offer limited to foodservice operators only. Chain operators must participate as single units. Contracted chain and bid accounts cannot participate. This coupon may be redeemed for a minimum of \$20 up to \$250 per individual foodservice operator. Submit this rebate with copies of distributor invoices or distributor printouts verifying valid products were purchased between September 28, 2023–December 31, 2023. DISTRIBUTOR PRINTOUTS OR INVOICES MUST INCLUDE THE FOLLOWING OPERATOR INFORMATION: Operator Name, Product Purchased, Number of Cases Purchased, Date the Product was Purchased, Invoice Number and Physical Address. Operators must fill out rebate coupon themselves. Distributor tracking reports do not qualify. Bulk redemptions by distributors and/or DSRs are not allowed. Request must be postmarked no later than February 10, 2024. Offer not redeemable in conjunction with any other offer. Operators may submit more than once until the maximum dollar amount is met; however, the initial submission must meet the minimum requirement of \$20. Allow 10–12 weeks for delivery. Incomplete or incorrect submissions will delay payment. Void where restricted, prohibited or banned.

PLEASE MAIL THIS COUPON WITH COPIES OF DISTRIBUTOR INVOICES TO:

SMITHFIELD CULINARY
BREAKFAST IS BACK COUPON REDEMPTION
PO BOX 552
TRAVERSE CITY, MI 49685

REBATE QUESTIONS? CALL 1-877-570-5504



NOW SUBMIT YOUR REBATES ONLINE AT WWW.RAPIDREBATE.NET

COUPON CODE: BIB230PR

PLEASE CHECK THE MARKET SEGMENT YOUR OPERATION/TYPE OF RESTAURANT BELONGS IN:

Are you a new Smithfield Culinary customer
or a current Smithfield Culinary customer

COMMERCIAL

- Full Service
 Casual Theme
 Family
 Upscale/Fine Dining
 C-Store
 Hotel/Motel/Resort

NON-COMMERCIAL

- College/University
 Elementary/Secondary School
 Business & Industry
 Recreational/Entertainment
 Transportation Foodservice
 Military/Correctional

OWNERSHIP

- Independent
 Local/Regional Chain
 National Chain

OWNERSHIP

- Contract Management
 Self-Operated

Number of meals served per day:

Breakfast _____ Lunch _____ Dinner _____

Approximate dollar volume annual food/beverage purchases: _____

YOU CAN ALSO SUBMIT OFFER FORM AND COPIES OF INVOICES ONLINE AT WWW.RAPIDREBATE.NET
 FOR MORE INFORMATION ON SMITHFIELD CULINARY PRODUCTS, PROMOTIONS, RECIPES OR MARKETING MATERIALS,
 CONTACT YOUR SMITHFIELD CULINARY REPRESENTATIVE/BROKER OR CALL 1-888-327-6526 WWW.SMITHFIELDCULINARY.COM/525

OPERATOR

SEPTEMBER 28 THROUGH DECEMBER 31, 2023



ITEM CODE	PRODUCT DESCRIPTION	\$/CS	CASES	TOTAL
90070247128600	SMITHFIELD BONELESS ROUND HAM, SILVER MEDAL, WATER ADDED, 2/13 LB, RANDOM WEIGHT	\$2.00		
90070247195558	SMITHFIELD CARVEMASTER APPLEWOOD HAM WITH NATURAL JUICES, GOLD MEDAL, 2/7.65 LB, RANDOM WEIGHT	\$2.00		
90070247128594	SMITHFIELD ORIGINAL PIT HAM, SILVER MEDAL, SMOKED, 2/14 LB, RANDOM WEIGHT	\$2.00		
90070247126415	SMITHFIELD HONEY & BROWN SUGAR PIT HAM, SILVER MEDAL, 2/16 LB, RANDOM WEIGHT	\$2.00		
90070247127535	SMITHFIELD PIT HAM, BRONZE MEDAL, HAM AND WATER PRODUCT, 2/15.65 LB, RANDOM WEIGHT	\$2.00		
90070247191727	SMITHFIELD HAM WITH NATURAL JUICES, GOLD MEDAL, BONELESS SMOKED, 2/9.2 LB, RANDOM WEIGHT	\$2.00		
90070247128419	SMITHFIELD BONELESS FLAT HAM, SILVER MEDAL, SMOKED, WATER ADDED, 2/10 LB, RANDOM WEIGHT	\$2.00		

OPERATORS SAVE UP TO \$250!

REDEEM THIS REBATE IN 10 MINUTES OR LESS! SUBMIT ALL THE FORMS ONLINE VIA RAPIDREBATE.NET!



STEP 1

Log on to
RapidRebate.net



STEP 2

Add product info
& upload invoices



STEP 3

Submit &
check status

INSTRUCTIONS FOR SUBMITTING THIS REBATE:

1	Use the grids on the front and back of this page to indicate the number of cases of each product code purchased during the eligible period.
2	Put the total number of cases purchased in the box below.
3	Put the total \$ amount of the requested rebate in the box below.
4	Complete the contact info (below) and segment info (right) and mail the form, along with required printout/invoice copies, to the address at right.

Terms and Conditions:

Offer limited to foodservice operators only. Chain operators must participate as single units. Contracted chain and bid accounts cannot participate. This coupon may be redeemed for a minimum of \$20 up to \$250 per individual foodservice operator. Submit this rebate with copies of distributor invoices or distributor printouts verifying valid products were purchased between September 28–December 31, 2023. DISTRIBUTOR PRINTOUTS OR INVOICES MUST INCLUDE THE FOLLOWING OPERATOR INFORMATION: Operator Name, Product Purchased, Number of Cases Purchased, Date the Product was Purchased, Invoice Number and Physical Address. Operators must fill out rebate coupon themselves. Distributor tracking reports do not qualify. Bulk redemptions by distributors and/or DSRs are not allowed. Request must be postmarked no later than February 10, 2024. Offer not redeemable in conjunction with any other offer. Operators may submit more than once until the maximum dollar amount is met; however, the initial submission must meet the minimum requirement of \$20. Allow 10–12 weeks for delivery. Incomplete or incorrect submissions will delay payment. Void where restricted, prohibited or banned.

PLEASE MAIL THIS COUPON WITH COPIES OF DISTRIBUTOR INVOICES TO:

SMITHFIELD CULINARY
2023 HOLIDAY HAM COUPON REDEMPTION
PO BOX 552
TRAVERSE CITY, MI 49685

REBATE QUESTIONS? CALL 1-877-570-5504



NOW SUBMIT YOUR REBATES ONLINE AT WWW.RAPIDREBATE.NET

COUPON CODE: HHOPR23

PLEASE CHECK THE MARKET SEGMENT YOUR OPERATION/TYPE OF RESTAURANT BELONGS IN:

Are you a new Smithfield Culinary customer
or a current Smithfield Culinary customer

COMMERCIAL

- Full Service
 Casual Theme
 Family
 Upscale/Fine Dining
 C-Store
 Hotel/Motel/Resort

OWNERSHIP

- Independent
 Local/Regional Chain
 National Chain

NON-COMMERCIAL

- College/University
 Elementary/Secondary School
 Business & Industry
 Recreational/Entertainment
 Transportation Foodservice
 Military/Correctional

OWNERSHIP

- Contract Management
 Self-Operated

Number of meals served per day:

_____ Breakfast _____ Lunch _____ Dinner

Approximate dollar volume annual food/beverage purchases: _____

MAXIMUM PAYOUT IS \$250 / MINIMUM PAYOUT IS \$20

# of \$2 CS:	X \$2.00/CS:	= Total \$:
--------------	--------------	-------------

CHECK WILL BE MAILED TO THE ADDRESS SHOWN BELOW (PLEASE PRINT)

OPERATION NAME:	CONTACT NAME:	
E-MAIL ADDRESS:		
OPERATION ADDRESS:		
CITY:	STATE:	ZIP:
TELEPHONE NUMBER:	FAX NUMBER:	
DISTRIBUTOR:	DSR NAME:	

YOU CAN ALSO SUBMIT OFFER FORM AND COPIES OF INVOICES ONLINE AT WWW.RAPIDREBATE.NET

FOR MORE INFORMATION ON SMITHFIELD CULINARY PRODUCTS, PROMOTIONS, RECIPES OR MARKETING MATERIALS, CONTACT YOUR SMITHFIELD CULINARY REPRESENTATIVE/BROKER OR CALL 1-888-327-6526 WWW.SMITHFIELD.CULINARY.COM



Feeser's
FOOD
DISTRIBUTORS



EST 1901
feesers.com
f @ in